

**Dear Charles,**

*Urgent personal matters delayed my work on this newsletter, but here it is at the start of a promising new year. The quotation below was shown to me by a family member, and I offer it forward to the family of Pacific Rim Sculptors:*

*There is something infinitely healing  
in the repeated refrains of nature ~ the assurance  
that dawn comes after night,  
and spring after the winter.*

*Rachel Carson (1907 - 1964)*

*Charles H. Stinson  
Chair*

### **Recent Events: December 15 Holiday Party**

Pacific Rim Sculptors celebrated the holidays in style with a festive pot-luck party and "pop-up" art show, hosted by members Susan Peterson, Maya Atsina and Charles Stinson.



#### In This Issue

December Holiday Party  
Exhibitions Committee  
ISC Conference Miami  
Members in the News  
New Members  
Opportunities  
ISC Outstanding Student  
Memberships  
Recycling Bin  
Facebook  
Contribute  
New Website

#### PRS and ISC



If you have experience in non-profits, please consider helping transform Pacific Rim Sculptors into a formal non-profit and chapter of the International Sculpture Center. [Contact us](#) for more information.

#### Quick Links

[PRS Website](#)

[International Sculpture Center](#)

[Texas Sculpture Group](#)

[Chicago Sculpture  
International](#)

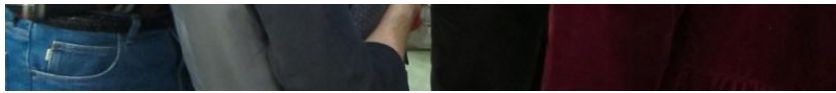
[Mid-South Sculpture Alliance](#)

[National Sculpture Society](#)

[Dierassi Resident Artists  
Program](#)

[SculptCast](#)

[Claudia Chapline  
Contemporary Art](#)



The party, complete with abundant, delicious snacks, was attended by a number of members and guests.



Lynne Todaro and Danielle Fafchamps

Eighteen members brought small sculptures or photos of a pieces for the pop-up art show. The pieces were set on numbered pedestals, and each attendee was invited to ask 5 questions of each other attendee in an effort to identify who brought which piece. It was a great way to get to know each other and, of course, the winners received prizes.

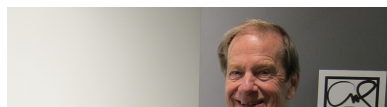
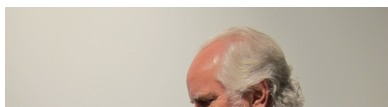


Jane Woolverton and guest

It was a festive and fun party. If you missed it, check out the photos, and take heart: Attendees liked it so much they want to repeat the event next year! Special thanks to Roger Smith, who contributed to this article!



Irma Vega Bijou and photo of her sculpture





Dan Woodard and his mixed media sculpture



Gene Erickson and his mixed media sculpture



Kati Casida's metal sculpture



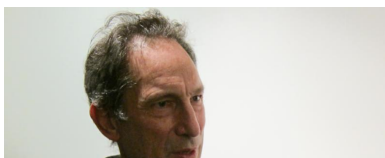
Susan Peterson and her ceramic sculpture



Arthur Comings and his mixed media sculpture



Anya Sophe Behn and her ceramic sculpture





Jane Woolverton, Charles Stinson and his mixed media sculpture



Mark Malmberg talking about his kinetic sculptures



Maren Sinclair Hurn and her ceramic sculpture



Joe Bologna and his steel sculpture



Danielle Fafchamps' carved stone sculpture



Maya Atsina and her ceramic sculpture





Oleg Lobykin and his carved stone sculpture



Rosy Penhallow and photo of her sculpture

## Exhibitions Committee: Scheduled Shows

The Exhibition Committee urges you to plan your submissions for upcoming shows:

- **Richmond Art Center, Richmond; June 14 - August 15, 2014:** This show will have two spaces: a large outdoor patio, perfect for large outdoor sculpture, and a long indoor gallery with a wall of windows looking onto the patio space, which is perfect for smaller or delicate sculptures. Submission deadline is pending.
- **Art Ark Gallery, San Jose; October 2014.** Details will be provided in the near future.

Proposals for several more shows are in active development by our Exhibitions Committee. If you would like to volunteer, contact [Susan Peterson](#) for more information.

## ISC Conference 2013, Miami



Stud #4, by Lynne Todaro

Lynne Todaro, Cynthia Handel, and Cynthia Siegel attended Art Basel Miami, the ISC Conference, and also participated in the *ISC Makers and Shapers* show. Lynne Todaro met with ISC Executive Director, Johannah Hutchison and discussed a possible future ISC Conference in the San Francisco Bay Area.



Cynthia Siegel and her sculptures

## Members in the News

Arnold Martin has installed a work in the City of Pasadena

Arnold Martin has installed a work in the City of Pasadena.



**Jann Nunn** and **Lynne Todaro** will have works in the Group Show 2014 "Transformation of Connectivity" at [Mercury 20 Gallery](#), Oakland, curated by Nick Dong. Exhibition is January 16 - February 22, 2014. There will be an Artists' Reception 4-6PM January 25.

**Rebecca Fox** has works in the "Small is Relative" show December 6, 2013 continuing through January 15, 2014 at {TH(e) Gallery}, Telegraph Hill, at 491 Greenwich Street, San Francisco. Opening reception was December 12.

**Corrine Whitaker** has published a new ebook, *Boogie Woogie Woman*, containing her poetry and digital art works. It is available through Blurb; you can [see a preview here](#).

## New Members

Welcome to our most recent new members:

- **Oleg Lobykin** ([www.lobykin.com](http://www.lobykin.com)) works in a variety of media, including stone carving and metal work.
- **David Trousdale** of Mountainview does ceramic figurative sculpture, as well as digital photography.
- **Patricia R. Hulin** of San Jose ([www.patriciahulin.com](http://www.patriciahulin.com)) creates fabricated, cast and forged metal sculptures that often include wood and ceramics.
- **Arnold Patrick Martin** ([www.arnoldmartin.com](http://www.arnoldmartin.com)) of Orange, CA works in a variety of media, ranging from wood and metal to plastics and composites, and often employs 3D modeling, digital rendering and CNC or 3D printing processes.
- **Danielle Fafchamps** ([www.daniellefafchamps.com](http://www.daniellefafchamps.com)) of Portola Valley works primarily in clay and bronze.

## Opportunities & Calls for Entry

**Bedford Gallery at Leshar Center for the Arts** in Walnut Creek, CA, issues a call for entries for Sky: A National Juried Exhibition. Juror DeWitt Cheng. [More information here.](#)

**San Francisco Arts Commission** Calls for Artists for the Alameda Creek Watershed Center. [More information here.](#)

**Emerging Artists of the Bay Area**, sponsored by the [MarinMoca.org](#). Juror Kenneth Baker. [More information here.](#)

**Oakwilde Ranch and Sculpture** calls for artists for its 7th Annual Spring Sculpture Exhibition, "52 Artists on 52 Acres". Juror Tony Natsoulas. [More information here.](#)

**The City of Livermore**, California, issued a national call for its Livermorium Public Art Project. [More information here.](#)

**The Edwardian Ball** ([www.edwardianball.com](http://www.edwardianball.com)) at the SF Regency Center. Curator Will Chase seeks hanging art and small sculptures with an "Edwardian, Victorian, gothic, antique, steampunk, creepy macabre, curio and/or elegant aesthetic". Oh, and he also seeks a fainting couch. Contact him for more information [will@willchase.com](mailto:will@willchase.com).

**Wisdom 2.0** at the SF Marriott. Curator Will Chase seeks hanging art and small sculptures that are visionary, expressive, thought-provoking, mindful and inspiring. Contact him for more information [will@willchase.com](mailto:will@willchase.com).

**The City of San Jose Public Art Program** seeks an experienced artist or artist-led team to create public art for the new Del Monte Park. [More information here.](#)

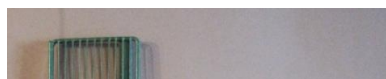
## ISC Outstanding Student Awards

Members of Pacific Rim Sculptors who are also faculty members can nominate currently-enrolled students for the ISC Outstanding Student Awards. Nominations opened January 1, 2014. Faculty members can nominate up to three nominees per school and must fill out an online Student Nomination Form by March 24, 2014. [See this link for more information.](#)

## Membership in PRS & ISC

Members of Pacific Rim Sculptors ([www.pacrimsculptors.org](http://www.pacrimsculptors.org)) must also join International Sculpture Center ([www.sculpture.org](http://www.sculpture.org)). PRS members get a 20% discount off ISC membership. Enter "PRS" for the ISC Chapter Code to get the 20% discount. Only dues-paying members are eligible for membership benefits, which include the newsletter, participation in exhibitions, and other activities.

## Recycling Bin





Four different kind of grates available for pickup in Fairfax. The wooden pack frame doesn't have the straps on it any more. Call Arthur Comings, (415) 721-7501.

### **Facebook: Pacific Rim Sculptors**

Remember to sign up for our Facebook page: Search for "Pacific Rim Sculptors" and join in the discussions and postings!

### **Contribute to the newsletter!**

[Click here](#) to send brief articles, reviews of shows, ideas for future newsletters. Please include clear photographs, if possible!

### **Website**

We want to continually improve our website. Email website suggestions to [Anya Sophe Behn](#).

---

**Happy sculpting!**

Charles Stinson