

Pacific Rim Sculptors

Newsletter

Spring Arrives!

April 2014

Dear Charles,

Spring is officially here. Thunderstorms alternate with warm sunny days; flowers and budding leaves splash color everywhere and winter's gray rapidly recedes. Creativity stirs and the artist reaches, involuntarily, for tools and materials.

*Charles H. Stinson
Chair*

Elections

Ballots for elections of officers will be distributed later this first part of April. The following is the current slate of incumbent officers:

President/Chair: Charles Stinson
Vice-President/Vice-Chair: Vacant
Treasurer: Leitha Thrall
Administrator: Anya Behn

If you want to run for an office send a brief message to info@pacrimsculptors.org including your name and the desired office immediately.

Upcoming Activity

There will be a group outing to the **Oakwilde Ranch and Sculpture Park** to see the exhibition **52 Artists on 52 Acres (Juror: Tony Natsoulus)** on Saturday, April 19 beginning at 11:00 AM. The address is 7111 South Burson Road, Valley Springs, CA. The activity will take place rain or shine (they have a great indoor space and covered patio). The basic fee for entry is \$10 per person; there will be opportunities for wine tasting and hors d'ouvres, and possibly more. Please RSVP to Leitha Thrall (cell: 510-703-3247, or email leithart@hotmail.com) for more information. Thank you to Leitha for arranging this!

Exhibitions Committee: Upcoming Shows

- **Summer Show at Richmond Art Center** June 14 through August 23: Juror will be John Toki. The show is for PRS

In This Issue

Elections
Activity: Oakwilde Ranch
RAC Show
Members in the News
Sculpture + Ukeleles
New Members
Missed Connections
Opportunities & Calls
Memberships
Facebook
Contribute
Website
Development

PRS and ISC



If you have experience in non-profits, please consider helping transform Pacific Rim Sculptors into a formal non-profit and chapter of the International Sculpture Center. [Contact us](#) for more information.

Quick Links

[PRS Website](#)
[International Sculpture Center](#)
[Texas Sculpture Group](#)
[Chicago Sculpture International](#)
[Mid-South Sculpture Alliance](#)
[National Sculpture Society](#)
[di Rosa Gatehouse Gallery](#)
[Dierassi Resident Artists Program](#)

August 29, 2014 will be held in Portland. The show is for PRS members and will include sculpture only. In addition to an indoor gallery there will also be outdoor space for larger pieces. Deadline for submissions is April 26. Submissions must be made online; selected works must be delivered, not shipped. [Details and submission form are available on our website at Calls for Art \(or click here\)](#). Thank you to Maru Hoeber for coordinating the show!

- **Fall Show at Art Ark San Jose** will take place in October, with a First Friday Art Reception 6-9 PM Friday, October 3, 2014. Call for entry will be announced soon. Thank you to Lynne Todaro for coordinating!
- **PRS is planning a show at Los Gatos Museum**; title, dates, and call for entry will be announced.
- **PRS hopes to have a show in Athens Greece**, partnering with Greek sculptors. More information will be provided as it comes available.

Members in the News

Mark Malmberg is in a two-person show opening May 1 with Stephan Soihl at Blackfish Gallery in Portland, OR (www.blackfish.com). His pieces are wirelessly interacting robotic mobiles.



Digital sculptor and painter **Corinne Whitaker** is exhibiting 3D printed sculptures and a large digital painting on plexiglass at *Monumenta: Women, Art, Technology* in Phoenix, Arizona. Whitaker has just published her fifth book of digital art and poetry, titled *Whomp!*, which can be [previewed at this link](#).

Patricia Bengston-Jones, one of Pac Rim's co-founders, will have pieces in a group show, and presented at the Jive & Java Discussions & Spotlight Gallery Artist Talks on March 29 at the [Richmond Art Center](#).

Claudia Chapline is showing *Old Song Book*, a wood assemblage, at *Sometimes Books* in Point Reyes Station, March 1 through June 1.

[SculptCast](#)

[Claudia Chapline
Contemporary Art](#)

[SMAart Gallery](#)

[Voigt Family Sculpture
Foundation](#)

[The Art of Assemblage](#)

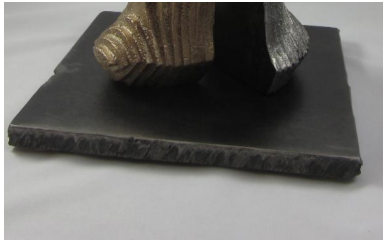
Sometimes Books in Fort Reyes Station, March 1 through June 1, 2014, and will be reading from her new book of haiku, *Bird Watch* on April 3 at 7:00 PM at the Tiburon-Belvedere Library.



Jeff Owen will be showing works at the Indian Wells Art Festival, April 4-6, 2014 at the Indian Wells Tennis Garden in Indian Wells, CA (see www.indianwellsartsfestival.com)

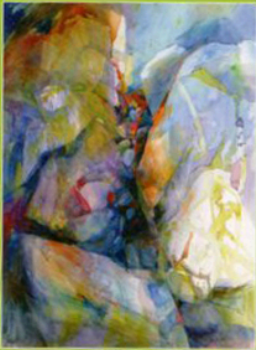
Student member **Eric Jacobson** has two pieces in the Beyond Structure show at 111 Minna Gallery in San Francisco. The opening reception is 5:00-11:00 PM on May 2, 2014; the show continues through May 31.





Rene Dayan-Whitehead, Bernadette Howard, and Jean Warren will have pieces in the Cloverdale Library Art Exhibit, with opening reception 6:00-8:00 PM Friday May 2, 2014; the show continues through May 30. The location is 401 North Cloverdale Boulevard in Cloverdale.

Cloverdale Library *Art Exhibit*



Jean Warren



Bernadette Howard



Rene Dayan-Whitehead

Arthur Comings has a piece *Special-built Little Woman* (below) in the ARC Gallery in San Francisco, and a photograph *Streamlined* in Art Works Downtown, in Marin.





Flavia Krasilchik has pieces in the popUp Gallery show titled *Naturally*, which explores our complex relationships with nature. The closing reception is 6:00-9:00 PM on April 11, 2014, at 1517 Park Street, Alameda, CA.



Reminder: Sculpture + Ukeleles = Party!

Barbara Stevens-Strauss is having an opening party on April 5th to celebrate her move into a new studio space shared with her friend Mike DaSilva, a luthier, who has been building ukeleles for ten years. There will be refreshments, plus live music: Tomohiro Tanaka on Koto, Steven Rowland on Shakuhachi, and Al Dodge and Friends on Ukeleles and other stringed instruments. The event is Saturday April 5, 2014 11:00 AM to 6:00 PM, at DaSilva Ukelele Company, Sawtooth Building, 2547 8th Street, Suite 28, Berkeley (510-599-9262). Come join the fun!





Welcome New Members

Cyrus James Tilton trained at the Art Institute of Seattle; his works can be seen in Oakland's Vessel Gallery.

Amanda R. Maxwell trained at the San Francisco Art Institute; she works in a wide range of media, including large-scale works in paper. She currently resides in Atlanta, GA, where she teaches High School Art.

Missed Connections

An author has written to PRS inquiring about mid-century ceramic artist Jean Nison (1922-?), whose mother, Margaret Lawson Bensco (1895-1989) was a sculptor in Berkeley, CA. If you have helpful information, please respond to Michael Padwee (mpadwee@gmail.com).

Opportunities

The 24th International Sculpture Conference will take place October 1-4, 2014 in New Orleans, Louisiana. [Details available here](#). Calls for entry for panels ends April 11; [more details about panels here](#).

Pilchuck Glass School offers a summer program with sessions of varying length, which are enhanced by presence of highly acclaimed artists in residence, including PRS member **Bella Feldman**. [Details available here](#).

Workshop Residence in San Francisco issued a call for applications for its 2014 season. This is a new program engaging the arts, crafts and design to create beautiful and useful products. Deadline is May 31, 2014. [Details available here](#).

Jijun Lu will have an all-levels figure sculpture class focusing on the female torso at Dogtown Sculptors in Oakland April 19, 26, May 3, 10, 17, and 24. The class is limited to 12 students. Find more information [at this link](#).

The Palo Alto Art Center has issued a call for applicants for its Artist In Residence Program with honoraria. Deadline is April 15, 2014.

[Details available at this link](#).

Details [available at this link](#).

Pac Rim member Al Honig is unfortunately losing a part of his studio of 32 years, requiring a change in direction for his work. He is offering a variety of assemblage materials, tables, and cabinets at very reasonable prices. Contact him via email at Al@AlHonig.com.

Studio Assistant Wanted: Pamela Merory Dernham is working on a 2D project and needs someone to cut acrylic templates with an exacto knife. She will train someone to use double stick adhesive with lighting gels as part of this project. Hours are very flexible. \$15 to \$20 an hour, depending on skill level. Contact: Pamela Merory Dernham at PDernham@pacbell.net.

GVG Contemporary, a retail fine art gallery in Santa Fe, New Mexico, is accepting submissions for possible gallery representation, and is specifically seeking a cohesive body of large outdoor sculpture. More information about the gallery can be found at gvqcontemporary.com.

California State University Chico is seeking applicants for a commissioned exterior artwork for the new Art & Humanities building currently under construction. Review the [full RFQ at this link](#).

There is a May 1 deadline for the **International Call for Submissions for the 18th Annual Sculpture by the Sea**, Bondi 2014, Sydney, Australia. More information is [available at this link](#).

The **South San Francisco Cultural Arts Commission** invites entries for a General Art & Sculpture Show, with hand-delivered sculpture accepted between 3:30-5:30 PM on Thursday, May 1, 2014. [For more information, check this link](#).

The Marin Society of Artists issued a national call for entries for Fresh Art 2014, with submission deadline of August 5, 2014. [Click here for more information](#).

The **Silicon Valley Art Fair** is April 10-13, 2014. For more information, check out www.siliconvalleycontemporary.com.

Bedford Gallery at the Leshar Center for the Arts in Walnut Creek issued a call for entries for its show Walnut Creek Turns 100: Celebrating the City Through Art. Deadline for on-line submissions is September 4, 2014. [Details available here](#).

Membership in PRS & ISC

Members of Pacific Rim Sculptors (www.pacrimsculptors.org) must also join International Sculpture Center (www.sculpture.org). PRS members get a 20% discount off ISC membership. Enter "PRS" for the ISC Chapter Code to get the 20% discount. For more information on ISC Member benefits or to join, [please click here](#). Only dues-paying members are eligible for membership benefits, which include the newsletter, participation in exhibitions, and other activities.

Facebook: Pacific Rim Sculptors

Remember to sign up for our Facebook page: Search for "Pacific Rim Sculptors" and join in the discussions and postings!

Contribute to the newsletter!

[Click here](#) to send brief articles, reviews of shows, ideas for future newsletters. If your contribution is time-sensitive, it is best to send materials not later than the third week of any month; include clear photographs, if possible!

Website

We want to continually improve our website. Email website suggestions to [Charles Stinson](#).

Happy sculpting!

Charles Stinson