

**Dear Charles,**

*Summer seemed so far away, but now beckons with previews of gloriously long, warm days ahead. Or fog, depending on the whims of the Bay Area microclimates.*

*The newsletter is chock-full: Pac Rim has grown a lot in the last year and our ISC chaptership is leading to exciting developments: The ISC leadership plans to visit the Bay Area and to attend a general membership meeting of our group the week of June 17-20, so block your calendars and watch for the meeting announcement!*

*The response to the call for the Richmond Art Center exhibition was so phenomenal that the show is being divided into two consecutive parts (June 14 - July 11, and July 22 - August 22). Many thanks to Maru Hoeber for coordinating!*

*Follow your passion of art-making, come join in the volunteer activities, and encourage your sculptor colleagues to join!*

*Charles H. Stinson  
President*

*PS: If you didn't get to the recent **Art Mrkt San Francisco**, check out photos by [DeWitt Cheng here](#).*

### International Sculpture Center News

**The International Sculpture Center (ISC) leadership plans to visit the San Francisco Bay Area the week of June 17-20. We have invited them to attend a general membership meeting (date and location to be determined). They will be surveying the Bay Area as a possible location for an upcoming International Sculpture Conference -- a great opportunity for PRS and for sculpture in the area. Watch for upcoming announcements!**

### RAC Show: SCULPTURE!

Thank you to all who submitted images for the upcoming show SCULPTURE! at the Richmond Art Center. Juror John Taki has

#### In This Issue

ISC Sculpture Conference  
RAC Show  
Upcoming Shows  
Members in the News  
Welcome New Members  
Calls for Submissions  
Members Offering or Seeking  
Artist In Residences  
Other Opportunities  
Still More Opportunities  
Memberships  
Facebook  
Contribute  
Website  
Development

#### PRS and ISC



If you have experience in non-profits, please consider helping transform Pacific Rim Sculptors into a formal non-profit and chapter of the International Sculpture Center. [Contact us](#) for more information.

#### QUICK LINKS

[PRS Website](#)  
[International Sculpture Center](#)  
[Texas Sculpture Group](#)  
[Chicago Sculpture International](#)

**SCULPTURE!** at the Richmond Art Center. Juror John Toki has selected the works for the show, and show coordinator Maru Hoeber has sent an email notifying those accepted. Over 50 Pac Rim members submitted works. Because of the number of works selected, this is being presented as two consecutive shows. Congratulations to those selected!

#### **First Show Selected Artists:**

Jane Woolverton, Patricia Bengston-Jones, Nelcy Tarics, Bette Linderman, Rosy Penhallow, Claudia Chapline, Patricia Vader, Kati Casida, Maj-Brit Hilstrom, Cyrus Tilton, Lynne Todaro, Darrell Phelps, James Watts, Virginia Sterns, Kathy de Rosa.

#### **Second Show Selected Artists:**

Flavia Krasilchik, Jann Nunn, Anya Behn, Ellen Sasaki, Maru Hoeber, Michael Walsh, Rene Dayan-Whitehead, Dan Good, Catherine Merrill, Danielle Fafchamps, Oleg Lobykin, Cynthia Handel, Patricia Hulin, Kristen Lindseth, Leitha Thrall, Clayton Theil, Ruth Tabacany, Eileen Fitz-Faulkner.

### **Exhibitions Committee: Upcoming Shows**

- **SCULPTURE!, Part 1 at Richmond Art Center;** June 14 through July 22; Juror: John Toki; Show Coordinator: Maru Hoeber.
- **SCULPTURE!, Part 2 at Richmond Art Center;** July 22 through August 22; Juror: John Toki; Show Coordinator: Maru Hoeber.
- **Fall Show at Art Ark San Jose;** October 2014, First Friday Art Reception 6-9 PM Friday, October 3, 2014. Call for entry will be announced soon. (Juror to be announced; Show Coordinator: Lynne Todaro).
- **PRS is planning a show at a Peninsula location;** title, dates, and call for entry will be announced (Show Coordinator: Danielle Fafchamps).
- **PRS hopes to have a show in Athens Greece,** partnering with Greek sculptors (Show Coordinator Kati Casida is exploring possibilities and is polling PRS members for interest.)

### **Members in the News**

**Nikki Schragar** recently installed her stainless steel mesh, glass and wire sculpture, a mini skyscraper, at the Schnader Law Offices in San Francisco.



[Mid-South Sculpture Alliance](#)

[National Sculpture Society](#)

[di Rosa Gatehouse Gallery](#)

[Djerassi Resident Artists Program](#)

[SculptCast](#)

[Claudia Chapline Contemporary Art](#)

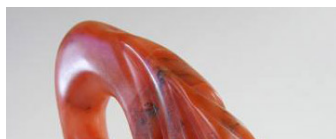
[SMAart Gallery](#)

[Voigt Family Sculpture Foundation](#)

[The Art of Assemblage](#)



**Rene Dayan-Whitehead** has several pieces in the Cloverdale Library Art Show (above), and also has works in the Sebastopol Center for the Arts Preview show for Art at the Source (below).



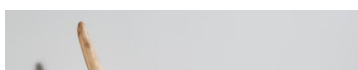


**Jann Nunn** has a solo show "Breathing Space" at Mercury 20 Gallery in Oakland CA. Reception is Saturday July 12, 4-6 PM; the show continues through August 9, 2014. She also has works in a group show "Seventeen" at the Hammerfriar Gallery in Healdsburg, CA; the show is up through July 6, 2014.



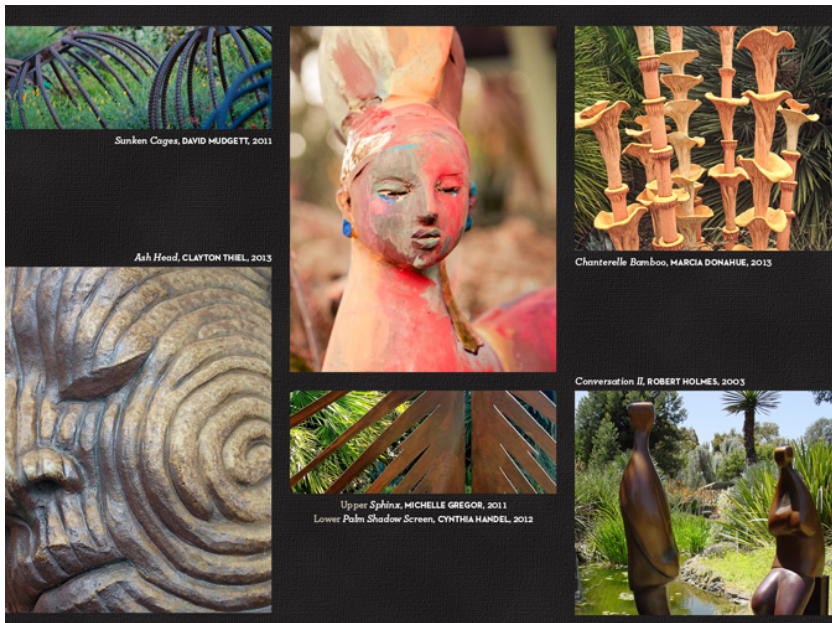
**Michael Walsh** has been busy: He was inducted into the Sculptors Guild in April 2014. He also exhibited his works in the Cutlog Art Fair booth B11 KiloWatt Gallery in NYC this May. In June he will attend the Digital Stone Project Residency in Tuscany, Italy, at the Garfagnana Innovazione. After creating the work there, it will travel to Lucca then conclude in Florence at the National Archaeological Museum. Earlier this spring he cofounded an arts organization in Pittsburgh, PA, "Pittsburgh Metal Art", which has the mission of developing permanent public metal sculpture in the Western Pennsylvania Region.

**Maru Hoerber** co-curated the show "Eclectic" at Epperson Gallery, in Crockett, CA. The show included works by PRS members (images below, clockwise from top left) **Todd Laby, Cynthia Handel, Pam Merory Dernham, and Maru Hoerber**. The opening reception is 5-7 PM Saturday June 7, and continues through July 20, 2014.





The Ruth Bancroft Garden celebrates its twentieth anniversary *Sculpture in the Garden*, with several Pac Rim members participating, including sculptures by **Flavia Krasilchik**, **Jane Woolverton**, **Cynthia Handel**, **Clayton Thiel**, **Jeff Owen**, and **Eileen Fitz-Faulkner**. The opening reception is Friday June 13 from 5:30 to 8:00 PM. For more information check out the garden's website: [RuthBancroftGarden.org](http://RuthBancroftGarden.org).



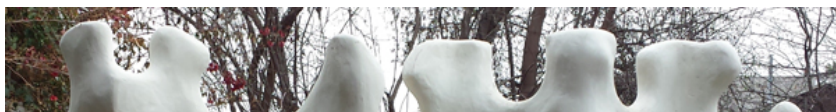
**Marianne Lettieri**, the 2014 guest artist at the Bade Museum and Doug Adams Gallery, located in Holbrook Hall, in Berkeley, CA, will present a new body of work inspired by the museum's collection of biblical archaeological artifacts. Her show, "Mining the Collection: Evidence of Life" includes 17 mixed media constructions and installations created with found objects used in domestic and manual labor. The show opens June 10 with a reception from 5-7 PM and closes August 29, 2014. [More information available here.](#)



**Jeff Owen** will also have works at Filoli's Garden June 10 through September 7, 2014. An opening reception takes place Thursday June 26 from 5-7 PM. [More information is available here.](#)

**Eileen Fitz-Faulkner** has works in the Mendocino Fort Bragg Gardens, in the Mendocino Art Center *Garden Theme* members' show; her piece, *Original Swim*, won first place in the 3D category. She will also have work in the Cloverdale *Sculpture Trail* show, in the State Fair, and in the Bancroft Garden Show. One of her smaller 2D works was featured on the back cover of the Women's Caucus for the Arts *Identity* catalog.

**Oleg Lobykin's** *Opus*, an interactive climbing wall sculpture for children (GFRC, 10'4" x 4'6" x 8') has been selected for the Cloverdale *Sculpture Trail* show.





**Cynthia Siegel** recently received a 2014-2015 Fulbright Award to live and work in India for seven months, where she will be researching sculptural traditions of the potters of West Bengal, who create works used in the Durga Puja, Saraswati Puja, and other festivals. Concurrently, she will be a visiting fellow at Kala Bhavana, the fine arts institute at the Visva-Bharati University, where she will create and exhibit large-scale sculptural installations informed by her investigations and by her passion for Indian art and culture.

**Patricia Vader** and **Joe Bologna** have been selected by the City of Milpitas for a public art commission. Their wind-driven kinetic steel sculpture, Kicker Kid, is scheduled to be installed in Cardoza Park in 2015.

**B. Stevens Strauss** will have a solo exhibition as a part of ProArts Open Studios at the Sawtooth Building, 2547 8th Street #28, Berkeley, 11AM-6PM on June 7 & 8, 14 & 15.



**Patricia Bengston-Jones** has a sculpture and two drawings in the show

**Patricia Bengtson Jones** has a sculpture and two drawings in the show *Runes Revealed*, organized by Nordic 5 Arts, at the Sanchez Art Center, in Pacifica, CA. The opening reception is Friday July 11, 7 - 9 PM; the show continues through August 10, 2014. [More details here.](#)

## Welcome New Members

**Paul Baker** of San Francisco, CA, trained at Wesleyan University, CT, and the Courtauld Institute of Art in London, England. He creates constructed sculptures using chiefly found objects. His website is [www.pbakerart.com](http://www.pbakerart.com).

**Ellen Joy Sasaki** of Richmond, CA, attends Contra Costa College in San Pablo, CA. She works in clay, glazes, and mixed media.

**Kristin Lindseth** of San Jose, CA, teaches sculpture, digital art and drawing at Mission College. She creates works in bronze and also does intaglio printmaking. Her website is [www.KristinLindseth.com](http://www.KristinLindseth.com).

## Calls for Submissions

The **City of San Diego Commission for Arts and Culture** issues a call for submissions for the Skyline Hills Branch Library Public Art Project. The art budget is \$140,000. Deadline for submissions is 4PM June 3, 2014. [More information available here.](#)

**Central Coast Craftmakers** of San Luis Obispo, CA, issues a call for entries for its show "Dimensions: Juried Exhibition of Fine Craft" scheduled for September 5 through October 12, 2014. Juror will be Carol Sauvion, creator and executive producer of the PBS series "Craft in America". Entries are due by 5PM June 20, 2014. [More information available here.](#)

**TAG Gallery** (CA) issues a National Call for Artists for its 9th Annual California Open Exhibition. Deadline for submissions is June 27, 2014. This is a juried show focusing on works by emerging artists. Juror Laddie John Dill is a renowned California artist, who was a student of Robert Rachenberg and Jasper Johns. [More information available here.](#)

The **Center for Cultural Innovation** (CA) issues a call for California Artist applicants for its grant awards in the Visual, Craft and Literary Arts. Submission deadline is July 1, 2014. [More information available here.](#)

**IEEE VIS Arts Program** issues a call for papers and artwork that explore the intersection between art and visualization. Deadline for submissions is June 15, 2014. Accepted works will appear in the VISAP'14 proceedings; selected works will appear in an issue of *Leonardo, the Journal of the International Society of the Arts, Sciences and Technology*. [More information available here.](#)

The **San Francisco Arts Commission** is seeking artists for a new public art project for the Moscone Center Expansion. Project budget is \$1,500,000 inclusive of all artist's fees and costs. Deadline is June 23, 2014. [More information available here.](#)



2014. [More information available here.](#)

The **LH Horton Jr. Gallery** issues a national call for artists for its show Visions in Clay 2014. The show is open to ceramic artists. Deadline is June 16, 2014. [More information available here.](#)

**Arc Gallery** in San Francisco issued a call for submissions for its national juried exhibition, *Dark*, which poses the question of "What is dark, what is hidden, what needs to be revealed?", showcasing new and alternative realities, where natural phenomena are emphasized or subverted, revealed or obscured. Juror is Nancy Toomey, of Toomey Tourell Gallery. Submission deadline is September 4, 2014. [More information available here.](#)

**The International Digital Media and Arts Association & Utah Valley University** issue a call for Digital Art, Design, & New Media for IDEAS 14 Art Exhibition. Submission deadline is September 26, 2014. [More information available here.](#)

**California Lawyers for the Arts & Blue Line Arts** issue a call for submissions for *Politically Charged*, featuring art that makes one think, get mad, cringe, or even laugh. Juror will be Shelly Willis, Director of the Sacramento Metropolitan Commission. Entry deadline is August 1, 2014. [More information available here.](#)

## **Members Offering or Seeking . . .**

**Lynne Todaro's school** wants to sell a brand-new ceramic shell mixer. The 90-gallon deluxe stainless steel model SM-30 is from Pacific Kiln Company and retails for \$16,449.69 (sales tax included). (For details about the mixer, [see this link.](#)) Contact Lynne at [lynne.todaro@wvm.edu](mailto:lynne.todaro@wvm.edu) or 408-855-5244 for more information.

## **Artist In Residence Opportunities**

**Headlands Center for the Arts** (CA) issues a call for applicants for its 2015 Artist In Residence program. Deadline for submission is June 6, 2014. [Details available here.](#)

## **Other Opportunities**

**The 24th International Sculpture Conference** will take place October 1-4, 2014 in New Orleans, Louisiana. [Details available here.](#) Early bird registration opens in June.

**Mercury 20 Gallery** of Oakland is seeking new members for its collective of approximately 20 members. Candidates must be East Bay residents. [More information about the gallery is available here.](#)

San Francisco's **ArtSpan** is seeking an Executive Director. For more information, see [artspan.org/artspan/careers](http://artspan.org/artspan/careers).

The iconic **Defenestration** sculptural installation by Brian Goggin is being removed after seventeen years of prominence on the walls of the derelict Hugo Hotel building. This piece is an outstanding example of

deinstall Hugo Hotel building. This piece is an outstanding example of art responding to urban blight. Varnish Fine Arts is partnering with Goggin to find a permanent new home for the pieces. Visit the piece by July 31, 2014, before it is deinstalled. [More information is available here.](#)

## **Still More Opportunities**

Member **Jeff Owen** invites PRS members to consider entering the following events:

- June 10 - September 7, 2014: [Filoli Summer Garden Sculpture Exhibition](#) at the Mansion - 86 Cañada Road, Woodside
- June 14 - July 13, 2014: [Ruth Bancroft Sculpture in the Garden Exhibition](#) - The Ruth Bancroft Garden Inc., Walnut Creek
- June 21-22, 2014: [La Jolla Festival of the Arts](#) - La Jolla
- July 12-13, 2014: [Los Altos Art and Wine Festival](#) - Los Altos
- July 19-20, 2014: [Connoisseurs' Marketplace](#) - Menlo Park
- July 25-27, 2014: [Bellevue Festival of the Arts](#) - Bellevue, WA
- August 9-10, 2014: [Los Gatos Fiesta de Artes](#) - Los Gatos
- August 23-24, 2014: [Palo Alto Festival of the Arts](#) - Palo Alto
- August 30-September 1, 2014: [Kings Mountain Art Fair](#) - Woodside

## **Membership in PRS & ISC**

When you join Pacific Rim Sculptors ([www.pacrimsculptors.org](http://www.pacrimsculptors.org)) you must also join International Sculpture Center ([www.sculpture.org](http://www.sculpture.org)). PRS members get a 20% discount off ISC membership. Enter "PRS" for the ISC Chapter Code to get the 20% discount. For more information on ISC Member benefits or to join, [please click here](#). Only dues-paying members are eligible for membership benefits, which include the newsletter, participation in exhibitions, and other activities.

## **Facebook: Pacific Rim Sculptors**

Remember to sign up for our Facebook page: Search for "Pacific Rim Sculptors" and join in the discussions and postings!

## **Contribute to the newsletter!**

[Click here](#) to send brief articles, reviews of shows, ideas for future newsletters. If your contribution is time-sensitive, it is best to send materials not later than the third week of any month. Please include clear photographs, if possible.

## **Website**

We want to continually improve our website. Email website suggestions to [Charles Stinson](#).

**Happy sculpting!**

Charles Stinson

