

# Pacific Rim Sculptors

## Newsletter

The New Year Unfolding

February 2015

Dear Charles,

Greetings! This is your new Pacific Rim Sculptors President, Anya Sophe Behn. Thank you for your votes; I appreciate you. We have had a fantastic two years of dedicated service from the marvelous and talented Charles Stinson. Please let him know you appreciate the work he has tirelessly accomplished for us!

In this year of 2015, I will continue to work with you all to

- Continue improving our communication processes (ways for us to discuss sculpture issues, creating a member-accessible on-line membership directory, and more),
- Develop a plan for a regular schedule of shows (which require your volunteer efforts, remember!),
- Begin regular membership meetings and more events, including lectures,
- Continue to increase our membership,
- Expand how we take advantage of the benefits of being an ISC Chapter, and
- Complete our transition to non-profit status.

I will only be able to accomplish these goals with your assistance. Remember, volunteering is the way we get things done, and it is the way into our Leadership Group (we usually have phone meetings every three months). A big thank you to all of you who have worked to make Pacific Rim Sculptors what it is today, and let's continue our improvements!

And if there is something you really want us to focus on, please drop me a line and let's talk about it: Send me email at [anya@aliencranberry.com](mailto:anya@aliencranberry.com) or send an email for distribution to our entire group at [pacrimsculptors@googlegroups.com](mailto:pacrimsculptors@googlegroups.com).

Here's to an auspicious new year!

Sincerely yours,  
Anya Sophe Behn  
President

### ISC News

International Sculpture Day - April 24, 2015

The ISC has designated April 24 as International Sculpture Day on

### In This Issue

ISC News  
Future PRS Exhibitions  
IS Day 2015  
Members News  
Welcome New Members  
Calls for Submissions  
Members Offering or Seeking  
Memberships  
Facebook  
Contribute  
Website  
From the Editor  
Development

### PRS and ISC



If you have experience in non-profits, please consider helping transform Pacific Rim Sculptors into a formal non-profit and chapter of the International Sculpture Center. [Contact us](#) for more information.

### QUICK LINKS

[PRS Website](#)  
[International Sculpture Center](#)  
[Texas Sculpture Group](#)  
[Chicago Sculpture International](#)

The ISC has designated April 24 as **International Sculpture Day**, an international annual celebration to champion sculpture (see [www.sculpture.org/isd](http://www.sculpture.org/isd)). The intention is to create a free world-wide event with artists and arts organizations coming together to celebrate sculpture with studio openings, exhibitions, lectures, demonstrations, gallery tours, receptions, presentations, and more.

What will that look like for our Chapter?

A number of our members have said they will host an **open studio** on that day. For San Francisco sculptors the date is convenient: It is immediately after our Spring Open Studios, so it is just a matter of keeping the studio in "show-mode" a few more days and getting the word out. The April newsletter will include a list of PRS activities for IS Day, including a list of participating members who open their studios, give lectures or demonstrations, or participate in an ISC Day exhibition.

ISC wants to help its chapters promote the events with notice of our organizations activities on its website and publications. Any *chapter or member ads in **Sculpture magazine*** for these activities and events will be 25% off and will also include showcased mention in the IS Day section of Sculpture magazine.

**What do YOU want to do for ISC Day? Will you open your studio? Let us know soon, so that we can take advantage of publicity in the ISC website and **Sculpture magazine!****

#### ISC Website

Look at the member resources in ISC's website ([sculpture.org](http://sculpture.org)), especially the chapter pages, and be sure to add new photos of your works to the site each year. This will allow review by collectors, gallerists, curators, and corporate buyers, who look there regularly.

You will also find calls for entries, for Artist In Residence, for workshops and other opportunities, including member discounts for many products and services.

#### ISC New Frontiers in Sculpture, Phoenix, AZ, November 4-7, 2015

Do plan to attend the next International Sculpture Conference, focusing on Creative Placemaking, Art on the Borders, Socially Engaged Art Practice, Desert as Site: New Earthworks; Multidisciplinary Artist-led Investigations, and other topics in contemporary sculpture. ISC has issued a Call for Panels; is there a panel that you and other Pacific Rim Sculptor colleagues might propose? (see [sculpture.org/az2015](http://sculpture.org/az2015)).

### Future PRS Exhibitions

- The ISC show **DISRUPTION at Grounds for Sculpture in New Jersey** will open October 24, 2015 and continue through April 23, 2016, possibly extending with a touring show.
- The exhibition **Magic Carpet Ride**, being coordinated by Kati Casida and Leitha Thrall, is planned for September 22 through October 24, 2015 in Athens, Greece.

### Your Very Own IS Day!

ISC is announcing the first IS Day (International

Mid-South Sculpture Alliance

National Sculpture Society

di Rosa Gatehouse Gallery

Djerassi Resident Artists Program

SculptCast

Claudia Chapline Contemporary Art

SMAart Gallery

Voigt Family Sculpture Foundation

The Art of Assemblage



**Sculpture Day) this April 24**, and invites Pacific Rim Sculptors to participate in group shows, open their studios to the public, give demonstrations, or other activities that will help raise public awareness of sculpture as an important art form.

To help promote the events, ISC offers announcements in its website and publications, including discounted ad rates. Fill out this [Participant Information Form](#) and send it to ISC to receive benefits including use of the ISC logo at your show or open studio! (The form can be printed and filled in by hand, or else filled out on-line, then printed and mailed, or saved and emailed.) **Submission deadline is February 26, 2015.**

**Also, this PRS Newsletter will highlight members who are participating in the IS Day activities, so sign up soon!**

## Member News

**Danielle Fafchamps** received the First Place Award (image left) in the Pacific Art League show at 668 Ramona Street in Palo Alto (CA). Juror was JoAnne Edwards, Executive Director of the Museum of Craft & Design, San Francisco.

**Giuseppe Palumbo** will have a solo show August 7 at Sugarman Peterson Gallery in Santa Fe (NM).



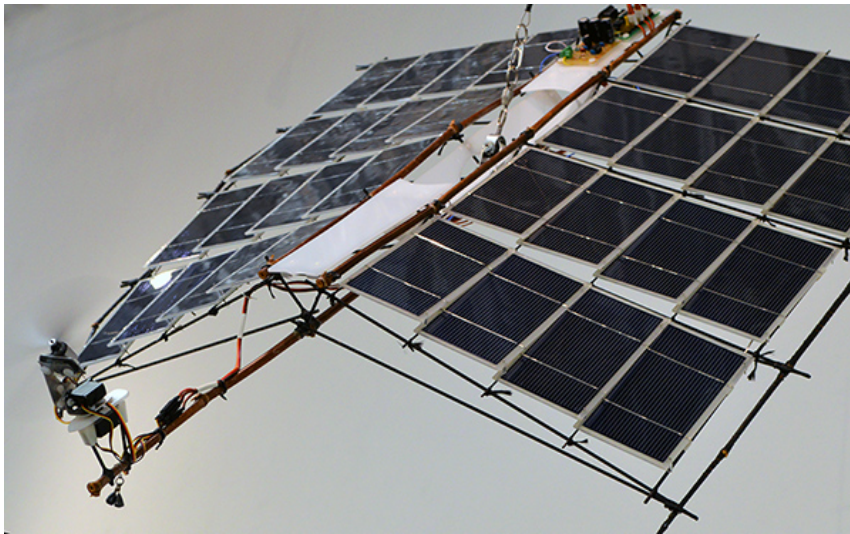
**Kristin Lindseth** has works in four exhibitions so far in the new year, including our Magic Carpet Ride show in Athens, Greece; a New Year Exhibition at Sandra Lee Gallery, San Francisco (CA); Cross Pollination Faculty Exhibition (image left), San Jose (CA), and Bradley International Print and Drawing Exhibition, in Peoria (IL). The piece shown left also won First Place in Sculpture at the Haggin Museum 57th National Juried Exhibition this past summer.



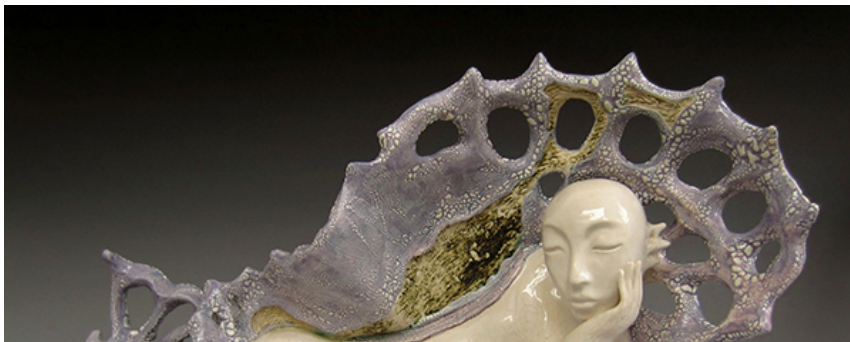
**Ellen Pulleyblank Coffey** just finished a commissioned piece (image right) as a part of her series titled Family Legacy Totems: Treasures That Prevail. Each sculpture represents a multigenerational family story.



**Mark Malmberg's** piece *Pink Sky Dragonfly* (image below) is in a show titled "Hear This" with sonic works by five artists. The show is in Palo Alto through April 12, 2015.



**Natasha Dikareva** is in a two-person show called Downtown Atlantis with Colette Crutcher at the Inclusions Gallery, 627 Corland Avenue, San Francisco, CA. The show will run to March 7, 2015, with Artist talk February 6, 7-8:30 PM (image below).





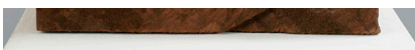
**Catherine Merrill** has figurative ceramic wall pieces and sculptures (image right) in the show *On the Edge 5: Erotic Photography and Sculpture Exhibition* at SOMArts Cultural Center, San Francisco (CA), February 13-15, including Friday and Saturday evening entertainment and no-host cocktail bar.



**B. Stevens Strauss announces the inaugural Berkeley Art Party at the Sawtooth Building.**

The event will feature four different artists in a one-night art event with live music on the second Friday of each month. Doors open at 6:30 and music continues until 9:30 PM. The first event is Friday, February 13 at 2547 8th Street #28, the DaSilva Ukulele Company. Featured artists include PRS members **B. Stevens Strauss** (image below, left) and **Patricia Bengston-Jones** (image below, right), plus KG Greenstein and Olga Evanusa Rowland. Plan to attend, and mark your calendar for this recurring event!





## Welcome New Members

**Elizabeth Trinh Nguyen-Espinoza** of Seal Beach, CA, creates oil paintings and bronze sculpture; she is a student and is planning work on her Masters.

## Calls for Submissions and Other Opportunities

**[Central Coast Sculptors Group has issued a call for entries for the California Sculpture SLAM at San Luis Obispo Museum of Art \(SLOMA\)](#)**. The juror will be Pacific Rim Sculptors member **Bella Feldman**. Deadline for submissions is May 15, 2015. See [www.soma.org](http://www.soma.org) and click on "Call for Artists" for more information.

**[1st International Symposium on Electronic Art \(ISEA\)](#)** will be held August 14-18, 2015, in Vancouver, Canada. The ISEA2015 symposium will be hosted by Simon Fraser University, and a vast variety of local academic and artistic partners. ISEA is the largest nomadic international academic gathering on 'electronic and emergent media'. Since its start in the Netherlands in 1988 it has taken place on 4 continents and in over 20 different cities. ISEA brings together scholarly, artistic, and scientific domains in an interdisciplinary discussion that showcases creative productions applying new technologies in art, interactivity, and electronic and digital media.

**[Proposals will be requested for sculpture made from Bay Bridge Steel. Check out the site www.baybridgesteel.org](#)** and click on the "What Would You Make" tab.

**[Arc Gallery & Studios issued a call for submissions for its National Juried Exhibition, FUSION](#)**, with the theme of binding two or more things into something entirely. Juror is Olivia Ongpin of Luna Rienne Gallery; opening reception will be May 2, 2015. Deadline for submissions is February 22, 2015.

**[Creative Capital](#)** is accepting applications for Awards in Moving Image and Visual Arts, which can include sculpture, contemporary crafts, installation, interdisciplinary projects, moving image, painting, photo-bases work, public art, and works on paper. Projects may be site-specific or intended for display in galleries, on the Web, etc. Awards are up to \$50,000 plus additional advisory services. Submission deadline is February 28, 2015.

**[The Artery \(CA\) issued a call for California Artists for its 26th Annual California Clay Competition and Exhibition](#)**. This will be in conjunction with the California Conference for the Advancement of Ceramic Art, sponsored by the John Natsoulas Gallery in Davis, CA. Deadline is February 14, 2015.

The **Garfagnana Innovazione** is offering a Digital Stone Carving Workshop with Robots in Tuscany, Italy, running June 6 through July 7, 2015. For information see [www.digitalstoneproject.com](http://www.digitalstoneproject.com).

The **2015-2016 Sculpture Trail exhibition** has issued its call for entries for sculpture. Each selected sculptor will receive \$250 to offset transportation costs. Deadline is February 20th, 2015. For more information see [www.101SculptureTrail.com](http://www.101SculptureTrail.com).

**The Silicon Valley Women's Caucus for Art & Bothwell Arts Center** issued a Call for Women Artists: SWAN Day Exhibit. Support Women Artists Now (SWAN) is an international holiday designed to showcase the power and diversity of women's creativity. All works must be wall mounted. For details see [SWAN Day](#).

**Japan U.S. Friendship Commission** issued a Call for Applicants: United States/Japan Creative Artists Residencies 2016, with stipend. Each residency includes travel grant and monthly stipend. Deadline February 2, 2015. [Click here for details](#).

[The European Digital Art and Science Network](#), with the LABoral Centro de Arte Creation Industrial and seven European artistic institutions issued a Call for Artist Residency. Submission deadline: February 9, 2015.

The **International Sculpture Center** issued a Call for Panels for the 25th International Sculpture Conference: New Frontiers in Sculpture, in Phoenix, AZ. Submission deadline is March 1, 2015. For info, see [sculpture.org/az2015](http://sculpture.org/az2015).

**Ryan James Fine Arts (WA) in collaboration with Curator Dawn Laurant** issued a call for submissions for cARTography: Personal Metaphors and Mindful Maps, an exhibition celebrating the art and language of maps. Deadline is March 21, 2015. For information go to [www.ryanjamesfinearts.com/#!calltoartists/c1391](http://www.ryanjamesfinearts.com/#!calltoartists/c1391).

**The San Juan Islands Sculpture Park** issued its 2015 Call for Sculptures for its 20 acre outdoor park. Placement is for a two year period if the work is not sold sooner. Deadline for submissions is April 1, 2015. [Click here for details](#).

**Arc Gallery & Studios**, San Francisco, CA, issued a call for artists for "FUSION", a national exhibition juried by Olivia Ongpin of Luna Rienne Gallery ([www.lunarienne.com](http://www.lunarienne.com)). [Click here for details](#). Submission deadline is February 22, 2015.

**The Hemera Foundation issued a call for applicants for its Tending Space Fellowship Program for Artists, 2015** (with stipend). The aim of the program is to nurture the creative practice of seeing things as they are, to cultivate that awareness, and to live and create from this insight. Applying artists must be committed to their art form and have demonstrable interest in contemplative practice. Deadline is February 15, 2015. [Details available here](#).

**Roswell Artist in Residence Program (NM)** issued an international call for applicants. The program provides a stipend. Deadline is March 15, 2015. [Details available here](#).

**Contra Costa Community College announces Art Faculty Job Openings**. Application deadline is February 12, 2015. [Details](#)

[available here.](#)

**Red Lodge Clay Center (MT) has issued Calls for Ceramic Artist Applicants** for its long-term and short-term art residencies. [Details available here.](#)

**Waterloo Arts (OH) issued a call for submissions for its Transgender Art Exhibit**, inviting artists who identify as trans to submit artwork for inclusion in a group exhibition showcasing works which express compelling narratives regarding gender identity. Deadline is February 28. [Details available here.](#)

**Firehouse Arts Center, Harrington Gallery, Pleasanton (CA) issued a call for greater SF Bay Area artists for an open juried exhibition "Fresh Works V"**. Deadline is March 18. [Details available here.](#)

**San Francisco Arts Commission issued a Call for Artists for its 2015/16 Prequalified Artist Pool.** SFAC offers a free workshop that covers strategies for making a strong application. Artists selected to be in the Pool will be eligible for various public art opportunities in San Francisco. Deadline is March 23. [Details available here.](#)

## Members Offering or Seeking . . .

**Patricia Bengston Jones is offering studio spaces in West Berkeley**, including access to indoor and outdoor spaces, air compressor, glass kiln and more -- \$290 to \$500 monthly. The space will be opened the first Saturday of each month for a West Berkeley Artisan Open Studio. She is also offering for sale various kinds of stone. Contact her directly at 510-849-3534.



Lynne Todaro says that her school has sent its brand new **Pacific Kiln Company's deluxe ceramic shell mixer** (left) to the state surplus website to be auctioned off. The mixer, which has never been used, has stainless steel tanks and holds 90 gallons of





materials. Go to [www.publicsurplus.com](http://www.publicsurplus.com) then on the right side select California as the region, then West Valley

Mission CCD as the agency.

***Got art equipment or supplies to sell or give away? Or looking for a slightly-used *whatchamacallit* or a slightly dinged *thingamabob* for that next sculpture project? [Just send an email to the editor](#) to include your announcement in this section of the next newsletter.***

## **Membership in PRS & ISC**

When you join Pacific Rim Sculptors ([www.pacrimsculptors.org](http://www.pacrimsculptors.org)) you must also join International Sculpture Center ([www.sculpture.org](http://www.sculpture.org)). PRS members get a 20% discount off ISC membership. Enter "PRS" for the ISC Chapter Code to get the 20% discount. For more information on ISC Member benefits or to join, [please click here](#). Only dues-paying members are eligible for membership benefits, which include the newsletter, participation in exhibitions, and other activities.

## **Facebook: Pacific Rim Sculptors**

Sign up for our [new](#) Facebook page, then you can join in the discussions and postings! To join, simply [visit this link](#) and click once on the "Join Group" button on the right hand side of the page. An Administrator will authorize your request, usually within 24 hours. The old group will no longer be available after August 31, 2014.

## **Contribute to the newsletter!**

[Click here](#) to send brief articles, reviews of shows, ideas for future newsletters. If your contribution is time-sensitive, it is best to send materials not later than the third week of any month. Please include clear photographs, if possible.

## **Website**

We want to continually improve our website. Email website suggestions to [Charles Stinson](#).

## **From the Editor**

*Dear (Contact First Name),*

**Congratulations and welcome to Anya Sophe Behn, our newly elected President, to Kate Ruddle, our newly elected Vice President, and to Leitha Thrall, who continues as our Treasurer!**

I have enjoyed serving as your President for the last two years, and I am delighted to see new leaders step up and bring new ideas and fresh energies to our growing organization.

I also want to express my gratitude to the many members who have taken time to send me comments and great suggestions during the last years.

The President's message will continue at the top of the newsletter; the message from the Editor will be farther below.

As always, I hope you enjoy this issue of your newsletter.

**Happy sculpting!**

Charles H. Stinson  
Editor