

Pacific Rim Sculptors

Newsletter

Burgeoning Spring

May 2015

Dear Charles,

I don't know about you, but I had a great time at our International Sculpture Day event! What is better than a party that celebrates sculpture?

We want to make this yearly event into a big thing. It is really good to have ISC advertising helping to promote our sculpture and sculpture events.

This newsletter includes a summary of several of our events for IS Day. If you had an ISDay event that wasn't included, let us know for the next newsletter.

*Thank you to all who volunteered their help in making IS Day a success. Speaking of volunteering, most PRS members have listed their areas of volunteer interest. But perhaps you haven't heard back from us in a timely manner ... or at all? Your leadership team is now working to improve our volunteer coordination and your participation will be **much** appreciated.*

Would you be interested in a list of indoor and outdoor spaces that want sculpture? Let's compile such a list so we can more easily get our works out into the world. Your suggestions can help us all!

Your President,
Anya Sophe Behn

PRS Does IS Day -- April 24, 2015

Contributed by Leslie Plato Smith

Patricia Bengton-Jones and **Kati Casida**, two of the co-founders of Pacific Rim Sculptors, drove to Stinson Beach, where **Claudia Chapline** hosted a brown bag lunch in her eponymous gallery's sculpture garden. Patricia, Kati, Claudia, Philip and Chad Glasshoff, and **Guiseppe Palumbo** (sculpture below, left) enjoyed conversations about their sculptures and reminiscing about the early days of PRS.

In This Issue

PRS Does IS Day 2015
ISC News
Upcoming PRS Exhibitions
Members News
Welcome New Members
Berkeley Art Party
Members Offering or Seeking
Memberships
Facebook
Contribute
Website
From the Editor
Calls for Submissions
Development

PRS and ISC



If you have experience in non-profits, please consider helping transform Pacific Rim Sculptors into a formal non-profit and chapter of the International Sculpture Center. [Contact us](#) for more information.

QUICK LINKS

[PRS Website](#)
[International Sculpture Center](#)
[Texas Sculpture Group](#)
[Chicago Sculpture International](#)



Kati Casida then returned home to open the doors of her studio to several guests, including professors from entomology, chemistry, and ethnic arts.

At **Studio One**, in Oakland, several PRS members spent the evening in an outburst of creativity constructing sculptures from found objects. Participants had the following comments:

A wonderful event, hearing about the work of others . . . then creativity let loose. -- **Ellen Coffey**

I had a lot of fun playing with you all. Great time meeting and working with fellow sculptors. It was fun making work as a duo with various impulses and skills. The 15-minute time restriction made for some spontaneous creations that took me out of my planning head and into my hands. Refreshing! -- **Eileen Fitz-Faulkner**



[Mid-South Sculpture Alliance](#)

[National Sculpture Society](#)

[di Rosa Gatehouse Gallery](#)

[Djerassi Resident Artists Program](#)

[SculptCast](#)

[Claudia Chapline Contemporary Art](#)

[SMAart Gallery](#)

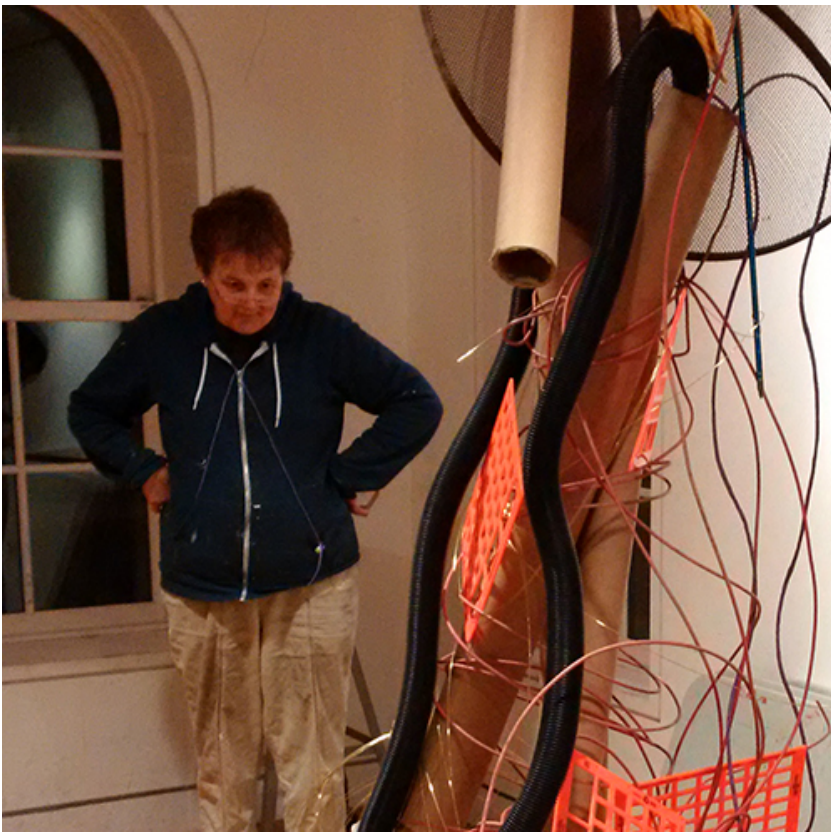
[Voigt Family Sculpture Foundation](#)

[The Art of Assemblage](#)



Fantastically rousing good time with talented and excellent sculptors. Making fast sculptures in teams with random materials was a wonderful way to celebrate International Sculpture Day. -- Anya Sophe Behn

I had a great time talking, eating, and making art. Our outburst of creativity was a pleasure! Thank you Anya and Kate for all your organizing and Eileen for all your stuff! -- Pam Dernham



In a combined IS Day plus San Francisco Open Studios **Charles Stinson's** show *BAMBOO* (detail below) was visited by over 900 people. The show featured 19 works created from or influenced by bamboo, including three bronzes. The show included a silent auction, which raised funds to benefit San Francisco's ArtSpan, Pacific Rim Sculptors, and the International Sculpture Center, sponsor of IS Day.





Irma Vega Binou did a pop-up exhibition at Tilden Park (below), with exhibition of works and group participation in creating new works in clay.



Rebecca Fox hosted a reception in her metal sculpture studio, with IS Day coinciding with her Spring Open Studios at Islais Creek Studios in San Francisco,

ISC News

International Sculpture Day

ISC's new celebration of sculpture on April 24 was a rousing success, with exhibitions, demonstrations and activities around the world.

ISC Website

Sculpture.org is a great resource; add photos of your works yearly for review by collectors, gallerists, curators, and corporate buyers. Also check out the Insider section of *Sculpture* magazine.

ISC New Frontiers in Sculpture, Phoenix, AZ, November 4-7, 2015

Plan to attend the next ISC Conference, focusing on Creative Placemaking, Art on the Borders, Socially Engaged Art Practice, and more (see sculpture.org/az2015).

Upcoming PRS Exhibitions

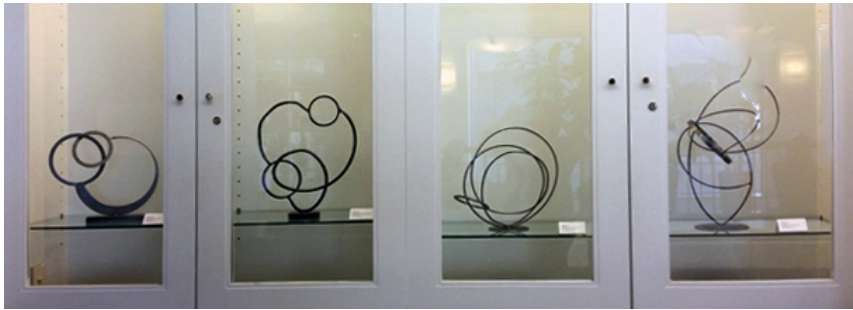
- **DISRUPTION**, a curated show of works by members of ISC Chapters, will open at Grounds for Sculpture in New Jersey on October 24, 2015 and continue through April 23

Jersey on October 24, 2015 and continue through April 29, 2016; a tour of the show is under consideration.

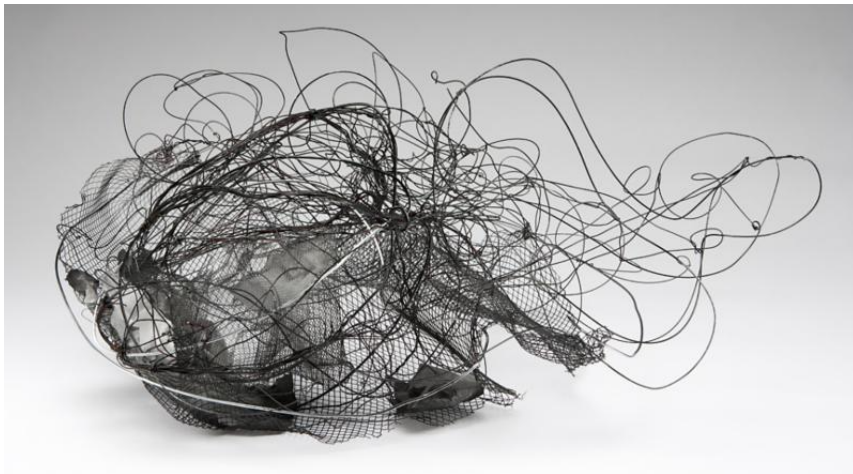
- **MAGIC CARPET RIDE**, coordinated by Kati Casida and Leitha Thrall, opens September 22, 2015 in Athens, Greece, and continues through October 24, 2015.

Member News

Rebecca Fox's metal sculptures (below) were selected for exhibition in Google's San Francisco Headquarters public reception lobby, at 345 Spear Street, 4th Floor.



Anya Sophe Behn had sculpture in the inaugural show of Abrams Claghorn Gallery in Albany, CA.



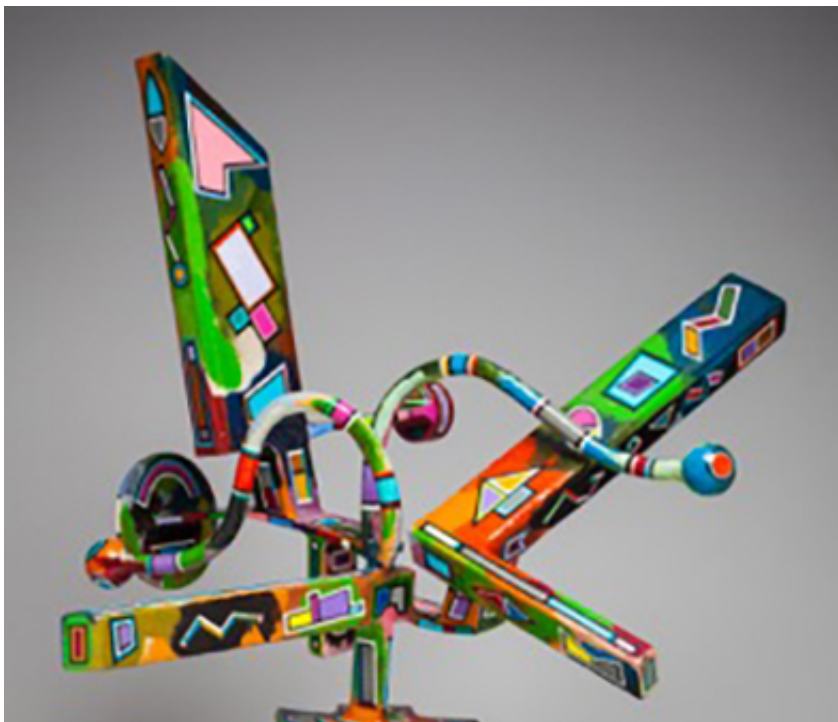
Corinne Whitaker (below) has an opening reception on Sunday May 17, 1-4 PM for her show No Rules at the Peninsula Museum of Art, Burlingame (CA). Paintings, sculptures, 3D printed sculptures, lenticular imaging will be exhibited. The show was curated by DeWitt Cheng.





Linda S. Fitz Gibbon will be exhibiting a body of ceramic and mixed media sculptures alongside paintings by Susan Aulik at the GearBox Gallery, Oakland (CA). The show runs May 21-June 20, with opening reception Friday June 5, 6-9 PM.

Joseph Slusky's exhibition *Spinal Musings*, features metal sculpture (below) and works on paper at Jackson Orhopaedic Foundation, Oakland (CA). The show runs from May 1 to June 27th, 2015, with Artist's Receptions and Open House May 1 and June 5, 2015 4:00-7:00 PM.





Welcome New Members

Tay Elizabeth Gersbach of Oakland, CA, attended California College of the Arts. She creates sculpture and sonic pieces from found materials. She currently teaches 4-12 year olds how to make musical instruments in Berkeley, CA. Her website is taygersbachart.virb.com.

Berkeley Art Party!



Don't miss this regular monthly 2nd Friday event, featuring works by four different artists and live music. For exhibiting artists this requires minimal time investment: set-up and take-down are the same evening. Participants are asked to contribute towards food and beverages and tips for performers in lieu of fees or commissions. **Leitha Thrall** (image below) was a recent PRS participant.



This is a fun, community-building event in a 2200 square foot, well-known venue that has a large email list. Email B. Stevens Strauss for details:

bstevens.strauss@gmail.com; www.BerkeleyArtParty.com.

Members Offering or Seeking . . .

Patricia Bengston Jones is offering one or more studio spaces for rent. The space has Open Studio the first Saturday of each month. Call her at 510-849-3534 for more information.

Patricia Bengston Jones is offering **stone carving classes** in her studio at 2019 2nd Street in Berkeley, CA. The classes are on Tuesdays, 6:30-9:00 PM and cost \$175. Hand tools, sandpaper, files, and several small kinds of stone will be available; individuals need to provide their own personal protective eye glasses. Call 510-849-3534 to reserve your space.



Lynne Todaro says that her school has sent its brand new **Pacific Kiln Company's deluxe ceramic shell mixer** (left) to the state surplus website to be auctioned off. The mixer, which has never been used, has stainless steel tanks and holds 90 gallons of materials. Go to www.publicsurplus.com then on the right side select California as the region, then West Valley

Mission CCD as the agency.

Post an Ad! *Getting rid of art stuff? Need a studio or studio mates? Need a used whatchamacallit or thingamabob for that next sculpture? [Email a description to the editor](#) to include in the next newsletter. Include a photo of items offered.*

Membership in PRS & ISC

When you join Pacific Rim Sculptors (www.pacrimsculptors.org) you *must also* join International Sculpture Center (www.sculpture.org). PRS members get a 20% discount off ISC membership. Enter "PRS" for the ISC Chapter Code to get the 20% discount. For more information on ISC Member benefits or to join [click here](#). Only dues-paying members are eligible for membership benefits, which include the newsletter, participation in exhibitions, and other activities.

Facebook: Pacific Rim Sculptors

Sign up for our new Facebook page, then you can join in the discussions and postings! To join, simply [visit this link](#) and click once on the "Join Group" button on the right hand side of the page. An

Administrator will authorize your request, usually within 24 hours. The old group will no longer be available after August 31, 2014.

Contribute to the newsletter!

[Click here](#) to send brief articles, reviews of shows, ideas for future newsletters. If your contribution is time-sensitive, it is best to send materials not later than the third week of any month. **Please** include clear photographs, if at all possible!

Website

We want to continually improve our website. Email website suggestions to [Website Suggestions](#).

From the Editor

Dear Member,

Congratulations to all who participated in the first International Sculpture Day!

For me, this was an extra special event: Due to several pressing matters during the last two years I was creating new works but did not have the energy or inclination to exhibit them. Exhibiting again and hearing feedback about the pieces was a thrill, and I now feel I am off to a fresh start.

*Moreover, this got me thinking about our annual December holiday party and its pop-up art show. **I would like your feedback:** I am considering hosting a month-long PRS show in my studio space (its exhibition space is being enlarged), open to the public and featuring small works by PRS members, with works offered for sale and with a percentage of sales going to benefit PRS. In addition to benefiting PRS this could help us to establish a regular show in San Francisco, which has been impossible due to prohibitively expensive rents for exhibition spaces.*

What do you think? Participation would involve a commitment to contribute a piece for exhibition and sale with fractional or total donation of proceeds, and likely a small commitment of volunteer time to staff the show during busiest hours, including scheduled receptions.

Let me know what you think . . . I'm already thinking of possible themes fitting the dense urban needs of San Francisco . . . "Folds Flat for Storage" ? "12x12x12" ? Other?

On another matter, please welcome Leslie Plato Smith, our new contributing editor. Thank you for volunteering your skills, Leslie!

As always, I hope you enjoy this issue of your newsletter.

Happy sculpting!

Charles H. Stinson
Editor

Calls for Submissions and Other Opportunities

Chico Art Center (CA) issued a National Call for Entries: Juried "All Media 2015". Juror: Natalie Nelson, Director/Curator of Pence Gallery, Davis (CA). Deadline for physical submissions: June 1, 2015; deadline for digital submissions: June 8 2015. [DETAILS](#).

Bay Area Discovery Museum, Sausalito (CA) issued a National Call for Applicants: Artist In Residence with Stipend for Fall 2015 and Spring 2016. Deadline is May 15, 2015. [DETAILS](#).

Sanchez Art Center (CA) announces a call for California Artists for the 7th Annual Sanchez Art Center 50-50 Show, in which selected artists create 50 small works (6"x6"(x6")) over 50 days. Deadline is May 12, 2015. Juror is Trish Bransten, of Rena Bransten Projects, San Francisco. [DETAILS](#).

Sebastopol Center for the Arts (CA) issued a call for entries for its juried show Mainly Black & White. Deadline is May 4, 2015. [DETAILS](#).

Silicon Valley Women's Caucus for Art issued a Call for Entries for Sexism: A Touchy Subject., open to all self-identified women artists. Juror: Catharine Clark, founder of Catharine Clark Gallery, SF. Deadline: May 10, 2015. [DETAILS](#).

Southern Exposure (CA) issued an International Call, Open Submissions for Artists, Spring 2015. Deadline: May 11, 2015. [DETAILS](#).

Axis Gallery (CA) issued a call for entries for its *10th National Juried Exhibition*. Juror is Max Presneill, LA artist, Head Curator for the Torrance Art Museum, and Curatorial Director of ARTRA Curatorial. Deadline: May 23, 2015. [DETAILS](#).

Tieton Arts & Humanities (WA) issued an *International Call for Entries: 10x10x10Tieton 2015*. Pieces may not be larger than 10 inches in any dimension. Deadline June 15, 2015. [DETAILS](#).

Marin Society of Artists and Marin Independent Journal issued a call for artists for the *Artists' View of the News* juried show to open in June. Participation is open to MSA members and artists from Marin and Sonoma counties, plus other readers of the Marin Independent Journal. Pieces must be hand delivered June 1 or 2. [DETAILS](#).

Headlands Center for the Arts (CA) seeks a full-time Director of Programs. Deadline: Open until filled. [DETAILS](#).

Marin Society of Artists issued a call for entries for a regional exhibition titled *The Left Coast - What Does It Mean To You?*, juried by Lauren R. O'Connell, Curatorial Project Coordinator, UC Berkeley Art Museum and Pacific Film Archive. Deadline is August 1, 2015. Cash

awards will be given. [DETAILS](#).

[Proposals will be requested for sculpture made from Bay Bridge Steel. Check out the site \[www.baybridgesteel.org\]\(http://www.baybridgesteel.org\) and click on the "What Would You Make" tab.](#)

San Luis Obispo's Central Coast Sculptors Group and the **San Luis Obispo Museum of Art (SLOMA)** issued a call for entry for its *California Sculpture Slam*, September 25-November 29, 2015. Deadline is May 15. [DETAILS](#).

Bedford Gallery at the Leshner Center for the Arts, Walnut Creek, CA, issued a call for show *Botanica: All Things Plant Life*. Deadline is May 8, 2015. [DETAILS](#).

The new **Gearbox Gallery** in Oakland, CA, recently opened below the Transmission Gallery, and is looking for new artist members, especially 3D artists. Check out their website: www.GearboxGallery.

The Peace Corps Commemorative Foundation has issued a call for a National Design Competition for a commemorative work in the heart of Washington, DC. Deadline is June 12, 2015. [DETAILS](#).

The Lumen Prize Exhibition, 2015, announces its International Call for Digital Art Entries. Deadline is June 8, 2015. Details available at lumenprize.com.

Alameda County Arts Commission issued a Call for Artwork for its Artwork Purchase Program. Deadline is May 15, 2015. [DETAILS](#).

Headlands Center for the Arts, CA, issued a Call for Applicants for its Artist-in-Residence 2016. Deadline is June 5, 2015. [DETAILS](#).

San Jose Museum of Art (CA) has posted two teaching positions: Gallery Teacher and Studio Arts Educator. [DETAILS](#).