

From: Charles H. Stinson chs@charlesstinson.com
Subject: News from Pacific Rim Sculptors
Date: June 1, 2015 at 4:33 PM
To: chs@charlesstinson.com



Pacific Rim Sculptors

Newsletter

Beckoning Summer

June 2015

Dear Charles,

I hope you are taking advantage of this variable and weird weather to make some sculpture.

This month I will introduce our group to the City of Berkeley to pave the way for us to have works exhibited in Berkeley City Hall. I will give a 5-minute presentation to the Civic Arts Commission, describing who we are and our vision. There won't be time for presenting images -- that will occur at a later meeting.

If you would like to attend, I will soon email details of where and when to our mailing list.

This will be the first step in what I hope is a long productive relationship between Pacific Rim Sculptors and the City of Berkeley.

Your President,
Anya Sophe Behn

Upcoming PRS Exhibitions

- **DISRUPTION**, a curated show of works by members of ISC Chapters, will open at Grounds for Sculpture in New Jersey on October 24, 2015 and continue through April 23, 2016; a tour of the show is under consideration.
- **MAGIC CARPET RIDE**, coordinated by Kati Casida and Leitha Thrall, will open September 22, 2015 in Athens, Greece, and continue through October 24, 2015.

ISC News

ISC Website

Sculpture.org is a great resource for members; add photos of your works each year for review by collectors, gallerists, curators, and corporate buyers. Also check out the *Insider* section of *Sculpture* magazine.

In This Issue

Upcoming PRS Exhibitions
ISC News
Members News
Welcome New Members
Software
Berkeley Art Party
Members Offering or Seeking
Memberships
Facebook
Contribute
Website
From the Editor
Calls for Submissions
Development

PRS and ISC



If you have experience in non-profits, please consider helping transform Pacific Rim Sculptors into a formal non-profit and chapter of the International Sculpture Center. [Contact us](#) for more information.

QUICK LINKS

[PRS Website](#)
[International Sculpture Center](#)
[Texas Sculpture Group](#)
[Chicago Sculpture International](#)

ISC New Frontiers in Sculpture, Phoenix, AZ, November 4-7, 2015

Plan to attend the next ISC Conference, focusing on Creative Placemaking, Art on the Borders, Socially Engaged Art Practice, and more (see sculpture.org/az2015).

Member News

Rebecca Fox showed her metal sculptures in May in the stARTup Art Fair at the Hotel del Sol in San Francisco. This was the inaugural year for this independently produced contemporary art fair for unrepresented artists, coinciding with ArtMRKT San Francisco. Rebecca was one of fifty artists taking over rooms in the hotel to exhibit their artwork.



Jeff Owen's pieces *Image* and *Nude Descending Staircase* (images below) were exhibited at the Saratoga Rotary Art Show.



Flavia Krasilchik will participating with the Alameda Artists Group in its June 6-7 2015 Open Studios. She will be showing her ceramic utilitarian and sculptural works (image left) in her garden by the Bay.

Corinne Whitaker showed her paintings, 3D printed sculpture, and lenticular imaging in the show

[Mid-South Sculpture Alliance](#)

[National Sculpture Society](#)

[di Rosa Gatehouse Gallery](#)

[Djerassi Resident Artists Program](#)

[SculptCast](#)

[Claudia Chapline Contemporary Art](#)

[SMAart Gallery](#)

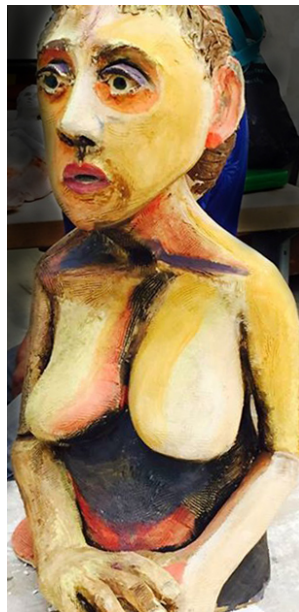
[Voigt Family Sculpture Foundation](#)

[The Art of Assemblage](#)



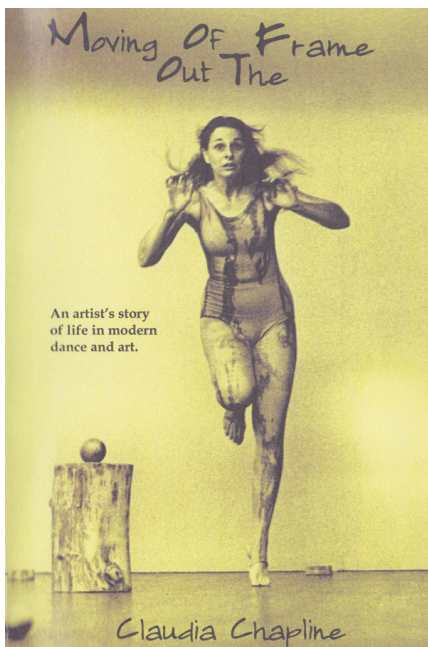
No Rules curated by DeWitt Cheng at the Peninsula Museum of Art in Burlingame (CA).

Leslie Plato Smith recently completed a new large ceramic sculpture (image, right, "fresh from the kiln").



Lynne Todaro sends word that Mission College Art Studios recently had an Art and Design Open House with hands-on demonstrations, plus Alumni Art Show in Vargas Gallery of the Gillmor Center, and a Student Art Sale.

Kate Ruddle recently curated the Student Exhibition Fabric Workshop 2015 show *In Stitches* for the San Francisco Art Institute.



Norfolk Press will in June publish **Claudia Chapline's** new book (and second memoir) titled Moving Out Of The Frame, the story of 50 years of a creative life in modern dance, performance art, and community arts in California. A book launch is planned for June 27 at the Claudia Chapline Gallery, Stinson Beach (CA).

Jann Nunn, Professor of Sculpture at Sonoma State University recently hosted *COMMENCE: Sculpture Projects 2015*, featuring sculptural and installation works by 11 graduating students.

Livingston Center for Art and Culture (MI) presents *A Conversation Between Two Artists*, **Cynthia Handel** and John Saurer, continuing through June 13, 2015. *Flight of the Phoenix*, a collaboration with Cynthia Handel and others will be performed June 13, 2015 in the Daniel Spoerri Sculpture Park, Seggiano, Italy (image below).

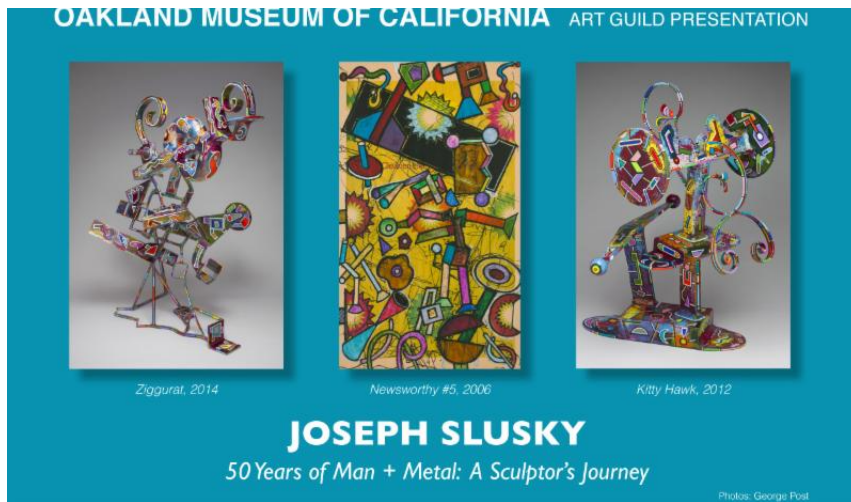


Mark Malmberg was interviewed by Nacho Zamora for Technergeia.org regarding his solar powered public art (click link for the interview, images and video). Also, Mark has an upcoming 12-month installation of his piece *Albireo* beginning June at the Paradise Ridge Winery near Santa Rosa.

Kristin Lindseth is finishing four new pieces for two exhibitions: *Transformation, Transcendence*, October 2016 at Sandra Lee Gallery in San Francisco (CA), and *Runes Revealed: Exhibition by NordicFiveArts*, at San Pablo Art Gallery (CA) July 24-August 25, 2015.



Norfolk Press has just published **Joseph Slusky, 50 years of Man + Metal: A Sculptor's Journey**. There will be a presentation in the James Moore Theatre of the Oakland Museum of California June 2, 2015.



Marvin Lipofsky will be participating in two shows sponsored by Craft in America. *California Handmade: State of the Arts*, June 7, 2015 - January 2, 2016 at Jacobs Education Center Gallery (image below), and *California Handmade: State of the Arts, Part 2*, July 11-September 12, 2015, at [Craft in America Center](#). Also, James Yood published an article on Marvin Lipofsky in the May 2015 issue of [Art Ltd.](#)



Peter Hiers will have two pieces in the National Museum of China this September as a part of the 6th Beijing International Art Biennale. Of the 350 worldwide artists, he is one of 7 Americans showing, and one of 8 invited to show more than one piece. This is his 3rd Beijing Biennale. He also has a piece *Wheel of Fortune* (image below) in the *Recycle* show through June at the BWAC Gallery in Red Hook, Brooklyn (NY); Juror: Elissa Goldstone, Socrates Sculpture Park Director of Exhibitions.





Taylor Gersbach and her sonic sculpture *Musical Chandelier* (image left by Benjamin Gordon-Murer) were featured in *SFWeekly's* coverage of upcoming Aeolian Day 2015. The event is organized by Thingamajigs.org, an association of sonic artists who use unusual tuning systems and instruments that are often of sculptural nature. The event takes place this Sunday in Jack London Square, Oakland (CA).

Welcome New Members

Invite your sculptor colleagues to join!

SOFTWARE

FREE 3D SOFTWARE TRIAL

Do you use 3D design software or want to try it? Check out the ongoing free trial of AutoDesk's Fusion 360, described as providing you with "... everything you need to complete the entire product development process ... brings together CAD to CAM to CAE in the cloud to give you the best technologies of today ...". The company provides flexible options for hobbyists and small businesses to

continue using the software after the trial period. Check it out at www.autodesk.com/products/fusion-360/overview. The trial includes plenty of helpful on-line tutorials to guide you step-by-step. The software provides digital sculpting tools for free form modeling as well as engineering tools to test fit, motion, create assemblies, animations, plus preparation for fabrication.

Berkeley Art Party!



This regular monthly 2nd Friday event features works by four different artists and live music (image of recent event below). Participating artists set-up and take down the show in the same evening, and are asked to contribute towards food and

beverages and tips for performers in lieu of fees or commissions. PRS member **Leitha Thrall** was a recent PRS participant. This community-building event takes place in a 2200 square foot, well-known venue that has a large email list. Email B. Stevens Strauss for details: bstevens.strauss@gmail.com; www.BerkeleyArtParty.com.



Members Offering or Seeking . . .

Patricia Bengston Jones is offering one or more studio spaces for rent. The space has Open Studio the first Saturday of each month. Call her at 510-849-3534 for more information. Come check out the space during her Open Studio June 6, 7, and 13 from 11AM to 5PM.

Patricia Bengston Jones is offering **carving instructions in wood or stone** in her studio at 2019 2nd Street in Berkeley, CA. The classes are on Tuesdays, 6:30-9:00 PM and cost \$175. Hand tools, sandpaper, files, and several small kinds of stone will be available; individuals need to provide their own personal protective eye glasses. Call 510-849-3534 to reserve your space.



Lynne Todaro says that her school has sent its brand new **Pacific Kiln Company's deluxe ceramic shell mixer** (left) to the state surplus website to be auctioned off. The mixer, which has never been used, has stainless steel tanks and holds 90 gallons of materials. Go to www.publicsurplus.com then on the right side select California as the region, then West Valley

Mission CCD as the agency.

Post an Ad! *Getting rid of art stuff? Need a studio or studio mates? Need a used whatchamacallit or thingamabob for that next sculpture? [Email a description to the editor](#) to include in the next newsletter. Include a photo of items offered.*

Membership in PRS & ISC

When you join Pacific Rim Sculptors (www.pacrimsculptors.org) you *must also* join International Sculpture Center (www.sculpture.org). PRS members get a 20% discount off ISC membership. Enter "PRS" for the ISC Chapter Code to get the 20% discount. For more information on ISC Member benefits or to join [click here](#). Only dues-paying members are eligible for membership benefits, which include the newsletter, participation in exhibitions, and other activities.

Facebook: Pacific Rim Sculptors

Sign up for our new Facebook page, then you can join in the discussions and postings! To join, simply [visit this link](#) and click once on the "Join Group" button on the right hand side of the page. An Administrator will authorize your request, usually within 24 hours. The old group will no longer be available after August 31, 2014.

Contribute to the newsletter!

[Click here](#) to send brief articles, reviews of shows, ideas for future newsletters. If your contribution is time-sensitive, it is best to send materials not later than the third week of any month. **Please** include clear photographs, if at all possible!

Website

We want to continually improve our website. Email website suggestions to [Website Suggestions](#).

From the Editor

Dear Member,

Artists have long paid entry fees for submitting artwork to shows. It is a financial burden for many and an irritant to all.

*Recently, the topic of **honoraria** paid to artists became a point of recent discussion: Are such payments helpful, or are they devaluating?*

For example, a recent call for entries for a year-long exhibition promised \$500 honorarium for accepted artists. Sounds great at first thought, hmm? But one member noted that amount does not begin to cover production, shipping, installation, insuring and return shipping of the artwork -- much less rental of a piece of artwork for a year-long period.

Certainly exposure is good: newly emerging artists may find the offer appealing; on the other hand, artists with longer track records may question the merit of such calls.

*Another member pointed to a growing international movement to compensate artists fairly for exhibitions and productions (**WAGE**, [WageForWork.com](#)), and commented that some countries now require museums receiving public funding to pay artists fees.*

This is a growing challenge to the tradition of placing an exhibition's financial burden on the shoulders of the exhibiting artists. Wouldn't it be wonderful if the public -- and governments -- recognized the true value of art and artists?

But change is slow, so for now artists continue to face a dilemma: Exposure is important, but silently accepting the cost burdens effectively encourages continuation of the status quo.

The debate caused me to think of the Greek comedy Lysistrata. What if artists withheld their art as a means to negotiate: would that hasten change? Or in this age of eyes glued to smart-phones and 60-second attention spans, would anyone notice?

As always, I hope you enjoy this issue of your newsletter.

Happy sculpting!

Charles H. Stinson
Editor

Calls for Submissions and Other Opportunities

Job at San Francisco Fort Mason Center (CA): Arts Program Manager to help develop and maintain relationships with partner arts organizations bringing programming to the Fort Mason Center. Deadline: June 30, 2015. [DETAILS](#).

SlowArt Productions (NY) issued an international Call for Entries: Strange Figurations at Limner Gallery. Surreal, visionary and extraordinary figurative art are appropriate for submission. Deadline: June 30, 2015. [DETAILS](#).

Eastern Washington University (WA) issued a Call for Installation Artists. Deadline June 5, 2015. [DETAILS](#).

San Joaquin Delta College's LH Horton Gallery (CA) issued a National Call for Artists: Visions in Clay 2015. Deadline: June 15, 2015. [DETAILS](#).

Tucson Jewish Community Center is accepting applications for its 7th Annual Outdoor Sculpture Exhibition. The year-long exhibition is scheduled for March 13, 2016 through March 1, 2017. Juror: Moira Geoffrion, Art Department Head Emerita, University of Arizona. Deadline: September 30, 2015. [DETAILS](#).

Jonathan Ferrara Gallery (LA) issued an International Call for Entries: 19th Annual NO DEAD ARTISTS Juried Exhibition. Deadline: June 15, 2015. [DETAILS](#).

TAG Gallery (CA), issued a Call for California Artists: 10th Annual California Open Exhibition, 2015. Deadline: June 26, 2015. [DETAILS](#).

City College of San Francisco (www.ccsf.edu) is offering *Art 185: Art Career & Transfer Portfolio Prep* with Instructor Nancy Mizuno Elliott this Fall. The course covers a broad range of career development issues. Contact the instructor with questions: NElliott@ccsf.edu.

Chico Art Center (CA) issued a National Call for Entries: Juried "All Media 2015". Juror: Natalie Nelson, Director/Curator of Pence Gallery, Davis (CA). Deadline for physical submissions: June 1, 2015; deadline for digital submissions: June 8, 2015. [DETAILS](#).

Tieton Arts & Humanities (WA) issued an *International Call for Entries: 10x10x10Tieton 2015*. Pieces may not be larger than 10 inches in any dimension. Deadline June 15, 2015. [DETAILS](#).

Marin Society of Artists and Marin Independent Journal issued a call for artists for the *Artists' View of the News* juried show to open in June. Participation is open to MSA members and artists from Marin and Sonoma counties, plus other readers of the Marin Independent Journal. Pieces must be hand delivered June 1 or 2. [DETAILS](#).

Headlands Center for the Arts (CA) seeks a full-time Director of Programs. Deadline: Open until filled. [DETAILS](#).

Marin Society of Artists issued a call for entries for a regional exhibition titled *The Left Coast - What Does It Mean To You?*, juried by

Lauren R. O'Connell, Curatorial Project Coordinator, UC Berkeley Art Museum and Pacific Film Archive. Deadline is August 1, 2015. Cash awards will be given. [DETAILS](#).

[Proposals will be requested for sculpture made from Bay Bridge Steel. Check out the site \[www.baybridgesteel.org\]\(http://www.baybridgesteel.org\)](#) and click on the "What Would You Make" tab.

The new **Gearbox Gallery** in Oakland, CA, recently opened below the Transmission Gallery, and is looking for new artist members, especially 3D artists. Check out their website: www.GearboxGallery.

The Peace Corps Commemorative Foundation has issued a call for a National Design Competition for a commemorative work in the heart of Washington, DC. Deadline is June 12, 2015. [DETAILS](#).

The Lumen Prize Exhibition, 2015, announces its International Call for Digital Art Entries. Deadline is June 8, 2015. Details available at lumenprize.com.

Headlands Center for the Arts, CA, issued a Call for Applicants for its Artist-in-Residence 2016. Deadline is June 5, 2015. [DETAILS](#).

San Jose Museum of Art (CA) has posted two teaching positions: Gallery Teacher and Studio Arts Educator. [DETAILS](#).

[Forward this email](#)



This email was sent to chs@charlesstinson.com by chs@charlesstinson.com | [Update Profile/Email Address](#) | Rapid removal with [SafeUnsubscribe™](#) | [Privacy Policy](#).

Charles H. Stinson Studios | 1890 Bryant Street, #300 | San Francisco | CA | 94110