

Dear Charles,

Our warmest thoughts are with former PRS member Arthur Comings, who was recently injured in an automobile-pedestrian accident, and send our hopes for his full recovery during this difficult time for him.

This past month I introduced Claudia for her book launch party in Stinson Beach. In the near future I will inform the Berkeley Civic Arts Committee about Pacific Rim Sculptors and explore possibilities for future exhibition ventures.

Your President,
Anya Sophe Behn

Special Event: Steven Oliver Ranch Tour

PRS members will have a **rare opportunity to tour the Steven Oliver Ranch Sculpture Collection** on Sunday, October 4, 2015 beginning at 10 AM. Advance registration and ticket purchase is essential. Participants **MUST** travel as a group by a hired bus. Individuals **CANNOT** drive separately to the site; they will be denied entry to the ranch.

Steven Oliver or a trained docent will guide the 2.5+ hour tour and speak about this astonishingly unique private collection. Several members of our group toured the ranch several years ago and had a spectacularly good time.

We will begin accepting reservations soon. As a bonus, the Steven Oliver Ranch will donate the fees to PRS to support our programming, so we all benefit from the best possible attendance. So please invite your friends to attend with you; the more tickets we sell, the better for PRS!

VOLUNTEER OPPORTUNITY: We need up to three volunteers to help coordinate this special event (and receive discounted tickets). PRS officers and Administrator will work closely with you on this. Tasks will involve some telephone calls and/or email and distribution

In This Issue

Members News
Upcoming PRS Exhibitions
ISC News
Welcome New Members
Berkeley Art Party
Members Offering or Seeking
Memberships
Facebook
Contribute
Website
From the Editor
Calls for Submissions
Development

PRS and ISC



If you have experience in non-profits, please consider helping transform Pacific Rim Sculptors into a formal non-profit and chapter of the International Sculpture Center. [Contact us](#) for more information.

QUICK LINKS

[PRS Website](#)
[International Sculpture Center](#)
[Texas Sculpture Group](#)
[Chicago Sculpture International](#)

tasks will involve some telephone calls and/or email and distribution of promotional materials. Contact info@pacrimsculptors.org if you can help!

Member News

Catherine Merrill's piece *Looking Back*, a figurative platter with multi-color underglazes, glaze and gold luster will be exhibited in *CALIFORNIA NOW: Clay, Glass & Enamel Juried Exhibition* at the Richmond Art Center, co-sponsored by the Association of Clay and Glass Artists of California and the Center for Enamel Art. Also in the show are PRS members **Nick Dong** and **Maru Hoerber**. Opening reception is Saturday June 13, 2015 5-7PM. The show continues through August 21, 2015.



Jeff Owen's piece "Your Cube, Sir" (left) has been installed on the Third Street bridge at Soscol in Napa for the 2015-2017 Napa ARTwalk event.

[Mid-South Sculpture Alliance](#)

[National Sculpture Society](#)

[di Rosa Gatehouse Gallery](#)

[Djerassi Resident Artists Program](#)

[SculptCast](#)

[Claudia Chapline Contemporary Art](#)

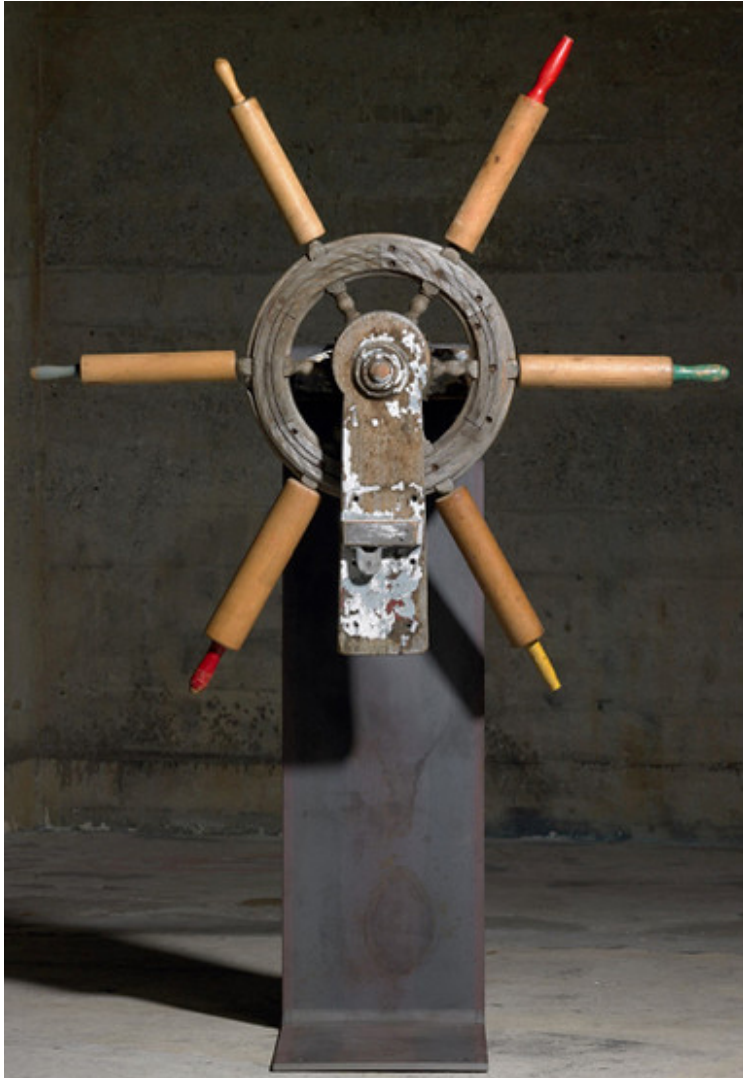
[SMAart Gallery](#)

[Voigt Family Sculpture Foundation](#)

[The Art of Assemblage](#)



The Ruth Bancroft Garden hosts their juried art exhibition and art sale Sculpture in The Garden June 19-July 19, 2015. PRS members exhibiting works include the following artists:
Ann Belden,

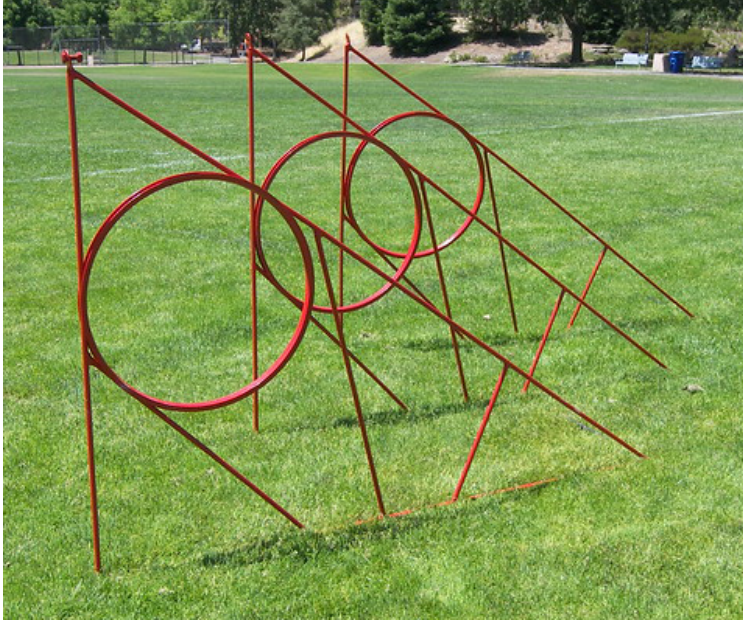


Jason Bernhardt,

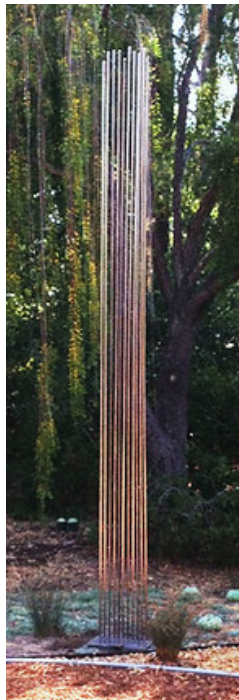
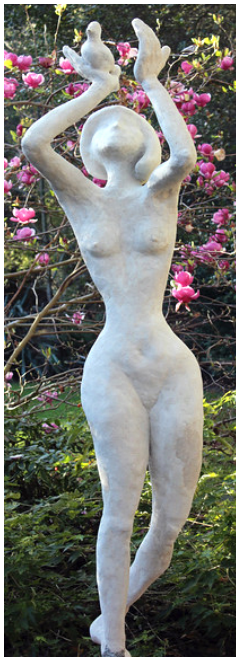




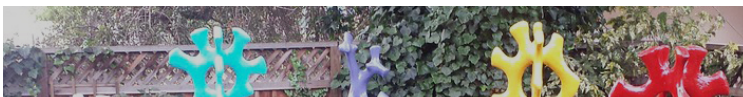
Joe Bologna,



Eileen Fitz-Faulkner, Jeff Owen, Dan Good,



Oleg Lobykin (below) and Patricia Vader.





Mark Malmberg has a piece (below) in a 12-month group exhibition "Conversations in Sculpture" at Paradise Ridge Winery in Santa Rosa. His work includes three solar-powered robotic creatures interacting with each other. [DETAILS](#).



Lynne Todaro has works in "Sculpture is 2015" in Watsonville through October 31, 2015, and also in "Sexism: A Touchy Subject" (image below) with opening reception Friday July 3 from 7-9PM at Arc Gallery, 1246 Folsom Street, San Francisco (CA), with the exhibition continuing through July 25, 2015.





Fred Schlatter shared images of recently completed sculptures, including "'33 Chevy Bird" (image below).



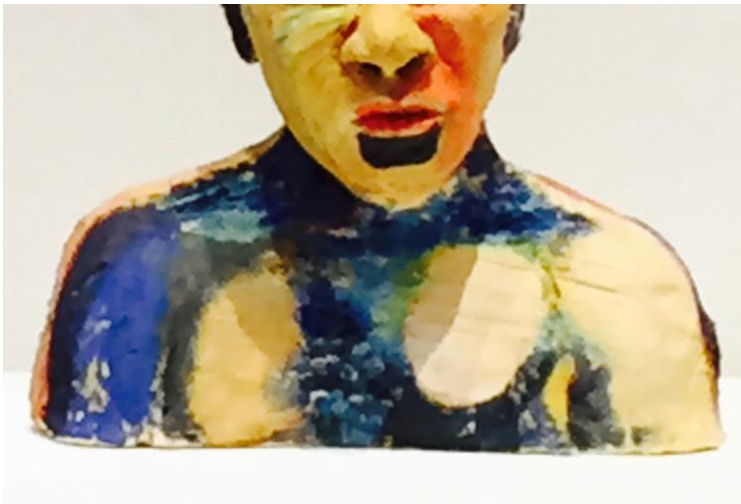
There will be book release signings in San Francisco and Stinson Beach for **Claudia Chapline's** new book *Moving Out of the Frame*, an artist's memoir of a creative life in modern dance, art performance, the feminist art movement, public art, international exhibitions, and her galleries. Events include a June 23, 2015, 6-9 PM book signing at Norfolk Press, 398 11th Street, San Francisco, CA (415-813-1884); and a June 27, 2015, 3-5 PM book reading and signing at Claudia Chapline Gallery, 3445 Shoreline Highway, Stinson Beach, CA (415-868-2308)

Al Honig and Fernando Orellana will have works in the upcoming two-person show *After Life*, at Incline Gallery in San Francisco (CA) July 10-August 15, 2015, with opening reception July 1 from 6-9 PM.



Leslie Plato Smith's piece "He" is appearing in the Richmond Art Center Members Show, curated by Jan Wurm.





Corinne Whitaker was recently chosen to represent District 13 in the *California Contemporary Art Show* in Sacramento. State Senator Jerry Hill, who represents most of San Mateo County and northern Santa Clara County, made the selection. Ms. Whitaker's work is on view now at Peninsula Museum of Art in Burlingame through August 23, 2015.

Ellen Pulleyblank Coffey has a piece (image below) in a show opening July 25th at the Compound Gallery in Oakland (CA).



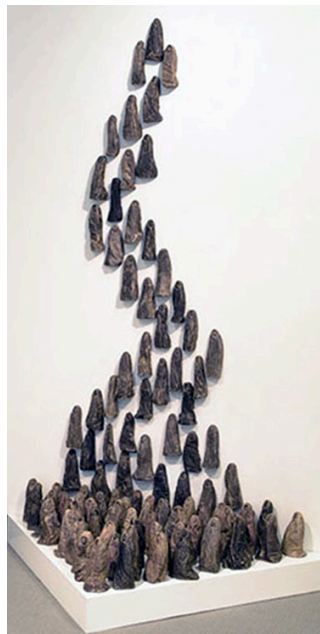
California Sculpture SLAM 2015, sponsored by the San Luis Obispo Museum of Art and the Central Coast Sculptors Group, opens September 25 and continues through November 29, 2015. Juror and PRS sculptor Bella Feldman selected 24 pieces for the exhibition in SLOMA, including a piece by **Ellen Pulleyblank Coffey** (image below left), and **Charles Stinson's** piece *Bamboo Matrix* (detail, below right).





Jann Nunn's works (image left) appear in a show *Cadence and Rhythm* opening Thursday July 2 and running through August 8. Opening reception is Saturday July 11, 4-7 PM. The show includes Jann's piece "Radical Digression" (a 64-foot long piece made of cut railroad track), "Don't Stop" (a new 4-part installation), works on paper ,and diminutive stone sculpture. Also showing will be Chris Komater's *Scylla & Charybdis*, at Mercury Twenty Gallery, 475 25th Street, Oakland (CA). Artist talk is July 16, 7PM.

Zahava Sherez's piece "Those People Are Us" (image right) will appear in a show in Paris, France, opening September 4, 2015.



Showing Sculpture in Non-traditional Spaces, Part I

Exhibiting ones sculpture in alternative venues is an unusual experience worth exploring. PRS member **Paul Baker** has been doing such exploration, including a solo exhibition in an ad agency lobby (below).



More recently, Paul and an artist colleague mounted a show in a 4-chair hair salon in a neighborhood near the Panhandle of San Francisco's Golden Gate Park. He observed several pro's and con's of the experience, summarized below.



On the POSITIVE side, it is relatively easy to assemble a one- or two-person show; the two-person format helpfully splits the work with a buddy; and it is also a great way to build your resume. And the fact is, it can make an unusual show -- a chance to do something really different from beginning to end. The art, venue and neighborhood all create great PR angles. That 'splash' can be a big plus for the venue, placing them on the map for the neighborhood, and giving people a reason to visit. The venue can play it up if it becomes a recurring event ("... be sure to visit our *art opening* next month . . .").





On the **NEGATIVE** side, don't kid yourself; it will cost you some, and it will require a good bit of work. Unconventional venues don't know the work involved in art openings and may feel, perhaps correctly, they are already doing enough by providing the space. Unless specifically negotiated, expect to cover all additional costs (invitations, postcards, opening reception supplies, refreshments, beverages, etc.) You will need to be well organized and expect to do most of the work yourself.

In upcoming issue we'll hear Paul's observations about some important planning matters when working with alternative venues, and also about using video in promotion of ones art.

Dusty Clay Diaries, Part I

As a 2014-15 Fulbright-Nehru Scholar to India, PRS member **Cynthia Siegel** followed her passion and fascination for clay sculptural traditions in which the completed artworks are intentionally left unfired. Often these works are made in conjunction with religious festivals, and at the ending ceremonies they are submerged into a nearby river. She felt drawn to the ethereal, fragile nature of these sculptural rhythms, and to the idea that after completion, the works are honored, appreciated, and subsequently restored to the earth.



In the Kolkata neighborhood of Kumartuli (image below), where many of these image-makers work and live, Cynthia had the opportunity to study construction techniques, the collaborative nature of the work, and the impact of contemporary influences on these traditions.



Concurrently, she explored how she might work collaboratively in a community using these sculptural techniques.



In the next issue, we'll hear more about Cynthia's experience in applying for and completing the Fulbright-Nehru Scholarship. If there is interest, perhaps we might schedule Cynthia to give an image talk at one of our future meetings.

Upcoming PRS Exhibitions

- **DISRUPTION**, a curated show of works by members of ISC Chapters, will open at Grounds for Sculpture in New Jersey on October 24, 2015 and continue through April 23, 2016; a tour of the show is under consideration.
- **MAGIC CARPET RIDE**, coordinated by Kati Casida and Leitha Thrall, will open September 22, 2015 in Athens, Greece, and continue through October 24, 2015. The pieces that were selected by Juror Professor Peter Seltz, former Curator of the New York MOMA, have been delivered to Bella Feldman's studio for shipment to Athens, Greece. More news to follow!

ISC News

ISC Website Sculpture.org is a great resource for members; add photos of your works each year for review by collectors, gallerists, curators, and corporate buyers. Also check out the *Insider* section of *Sculpture* magazine.

ISC New Frontiers in Sculpture, Phoenix, AZ, November 4-7, 2015

Plan to attend the next ISC Conference, focusing on Creative Placemaking, Art on the Borders, Socially Engaged Art Practice, and more (see sculpture.org/az2015).

Welcome New Members

Stephanie G. Metz of San Jose (CA) currently works in wool and industrial felt. She received her BFA in sculpture from the University of Oregon in 1998. She teaches needle-felted sculpture in her School of Visual Philosophy Studios, in CCA in Oakland and SF, in the Arrowmont School of Arts and Crafts in TN, Cabrillo College in Aptos (CA) and Penland School of Crafts in NC. Her website is www.stephaniemetz.com.

Invite your sculptor colleagues to join!

Berkeley Art Party!



This regular monthly 2nd Friday event features live music, plus works by four different artists, who help set-up and take down the show in the same evening. Participating artists are asked to contribute towards food and beverages and tips for performers in lieu of fees or commissions. PRS members have been regular participants. This community-building event takes place in a 2200 square foot venue with a large email list. Contact B. Stevens Strauss for details:

bstevens.strauss@gmail.com; www.BerkeleyArtParty.com.

Members Offering or Seeking . . .

Lynn Todaro announces that Mission College has a position open for an Instructional Lab Technician in the Art Department. Application deadline is July 5, 2015. For information please visit <http://wvm.peopleadmin.com/postings/3081>.



Lynne Todaro says that her school has sent its brand new **Pacific Kiln Company's deluxe ceramic shell mixer** (left) to the state surplus website to be auctioned off. The mixer, which has never been used, has stainless steel tanks and holds 90 gallons of materials. Go to www.publicsurplus.com then on the right side select California as the region, then West Valley

Mission CCD as the agency.

Post an Ad! *Getting rid of art stuff? Need a studio or studio mates? Need a used whatchamacallit or thingamabob for that next sculpture? [Email a description to the editor](#) to include in the next newsletter. Include a photo of items offered.*

Membership in PRS & ISC

When you join Pacific Rim Sculptors (www.pacrimsculptors.org) you *must also* join International Sculpture Center (www.sculpture.org). PRS members get a 20% discount off ISC membership. Enter "PRS" for the ISC Chapter Code to get the 20% discount. For more information on ISC Member benefits or to join [click here](#). Only dues-paying members are eligible for membership benefits, which include the newsletter, participation in exhibitions, and other activities.

Facebook: Pacific Rim Sculptors

Sign up for our new Facebook page, then you can join in the discussions and postings! To join, simply [visit this link](#) and click once on the "Join Group" button on the right hand side of the page. An Administrator will authorize your request, usually within 24 hours. The old group will no longer be available after August 31, 2014.

Contribute to the newsletter!

[Click here](#) to send brief articles, reviews of shows, ideas for future newsletters. If your contribution is time-sensitive, it is best to send materials not later than the third week of any month. **Please** include clear photographs, if at all possible!

Website

We want to continually improve our website. Email website suggestions to [Website Suggestions](#).

From the Editor

Dear Member,

This issue of your newsletter presents the first of several multi-part articles by two members who describe some unique career experiences. Perhaps their experiences will resonate with you, and perhaps you have similar experiences to share with your colleagues.

The annual ISC conference is coming up, this time in Phoenix (AZ), and I heartily urge PRS members to attend. Last year's conference was outstanding, and this one also looks exceptional. It is an opportunity to meet and share experiences with some amazing colleagues from around the world.

Also, start your holiday planning now: This December we will almost certainly have another holiday party. The plan this year is for the pop-up art show to last a full month, with sales benefiting PRS activities. The theme will focus on small works suitable for dense urban environments (possibly "Folds Flat for Storage", or "Small Works under 12x12x12 inches") ?.

As always, I hope you enjoy this issue of your newsletter.

Happy sculpting!

Charles H. Stinson
Editor

Calls for Submissions and Other Opportunities

Bleicher/Gorman Project Space (CA) issued an open call for its 2nd Annual *Spectrum-Gestalt Gallery Exhibit*. Deadline is July 6, 2015. [DETAILS](#).

PRO ARTS (Oakland, CA) seeks an Executive Director who can lead the nonprofit into its fifth decade of artistic excellence. [DETAILS](#).

Mission College Art Department is offering an Instructional Lab Technician position. Deadline is July 5, 2015. [DETAILS](#).

Lynne Todaro is urging PRS members to participate in a Pacific Rim Sculptors booth at the upcoming San Jose Mini Maker Faire. Deadline to apply is July 6, 2015. Please let [Lynne know](#) if this might be of interest to you. [DETAILS](#).

The Brayer Gallery, located in the city of Ventura, north of LA (CA) issued a National Call for Proposals 2015 for exhibitions of emerging

and mid-career artists through the end of 2015. [DETAILS](#).

Djerassi Resident Artists Program 2015 announces its Scientific Delirium Madness event Sunday July 19, 2015 from 10 AM to 5PM. The Program's Artist Barn and private grounds (Woodside, CA) are open to the public during this event. Reservations are required; \$50 per person. Light gourmet refreshments will be served. [DETAILS](#).

Tucson Jewish Community Center is accepting applications for its 7th Annual Outdoor Sculpture Exhibition. The year-long exhibition is scheduled for March 13, 2016 through March 1, 2017. Juror: Moira Geoffrion, Art Department Head Emerita, University of Arizona. Deadline: September 30, 2015. [DETAILS](#).

City College of San Francisco (www.ccsf.edu) is offering *Art 185: Art Career & Transfer Portfolio Prep* with Instructor Nancy Mizuno Elliott this Fall. The course covers a broad range of career development issues. Contact the instructor with questions: NElliott@ccsf.edu.

Headlands Center for the Arts (CA) seeks a full-time Director of Programs. Deadline: Open until filled. [DETAILS](#).

Marin Society of Artists issued a call for entries for a regional exhibition titled *The Left Coast - What Does It Mean To You?*, juried by Lauren R. O'Connell, Curatorial Project Coordinator, UC Berkeley Art Museum and Pacific Film Archive. Deadline is August 1, 2015. Cash awards will be given. [DETAILS](#).

[Proposals will be requested for sculpture made from Bay Bridge Steel. Check out the site \[www.baybridgesteel.org\]\(http://www.baybridgesteel.org\)](#) and click on the "What Would You Make" tab.

The new **Gearbox Gallery** in Oakland, CA, recently opened below the Transmission Gallery, and is looking for new artist members, especially 3D artists. Check out their website: www.GearboxGallery.

San Jose Museum of Art (CA) has posted two teaching positions: Gallery Teacher and Studio Arts Educator. [DETAILS](#).