

Pacific Rim Sculptors

Newsletter

Summer News . . .

May 2016

Hello Charles!

Welcome to a newsletter issue jam-packed with sculpture-related news!

*Be sure to check your May issue of **SCULPTURE** for an excellent writeup of the **Disruption** exhibition by the three ISC Chapters at Grounds for Sculpture, NJ (pp. 56-59). Included are a photo of **Lin McJunkin's** piece "Eaarth in the Balance," plus commentaries about works by PRS members **Nick Dong, Walter Bruszewski, Jann Nunn, Cynthia Handel, and Maru Hoerber.***

*Also see the excellent writeup of PRS activities in the ISC Chapter Group News (p. 80), including a photo of **Zahava Sherez** and a photo from our tour of the Steven Oliver Ranch. (A photo on the same page mis-identifies me as the current, rather than past, president of PRS; a correction will be forthcoming.)*

*Congratulations and thanks again to **Anya Behn** for serving as president for the last year and many months. Our Board will meet soon to expand its membership and panel of officer candidates.*

*Lastly, as you read below about these wonderful fruits of our efforts, realize these don't happen in a vacuum: volunteerism is the magic that turns ideas into reality. **Irma Bijou**, our new Volunteer Coordinator, shares some ideas below about how to maximize our effectiveness, excitement -- and fun.*

Enjoy this issue of your newsletter, and Happy Sculpting!

*Best Wishes,
Charles H. Stinson
Newsletter Editor*

PRS Month-long Exhibition for IS-Day

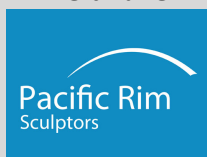


Pacific Rim Sculptors celebrated the second International Sculpture Day (IS-Day) with a month-long members' exhibition and sale of indoor and outdoor sculptures at **Art Object Gallery, 592 N. 5th Street, San Jose, CA 95112** (see www.ArtObjectGallery.com). Over twenty PRS members installed works and took turns staffing the gallery space during the exhibition. Exhibiting artists celebrated IS Day with a party and reception Saturday evening April 23, which was attended

IN THIS ISSUE

PRS IS-Day
Exhibition
Article Headline
Article Headline
Members News
ISC News
Welcome New
Members
Berkeley Art Party
Members Offering or
Seeking

PRS and ISC



Do you have experience working with non-profits or grant-writing? Pacific Rim Sculptors needs volunteers to help create our future! [Contact us](#) for more information.

QUICK LINKS

[PRS Website](#)

[International Sculpture Center](#)

[Texas Sculpture Group](#)

[Chicago Sculpture International](#)

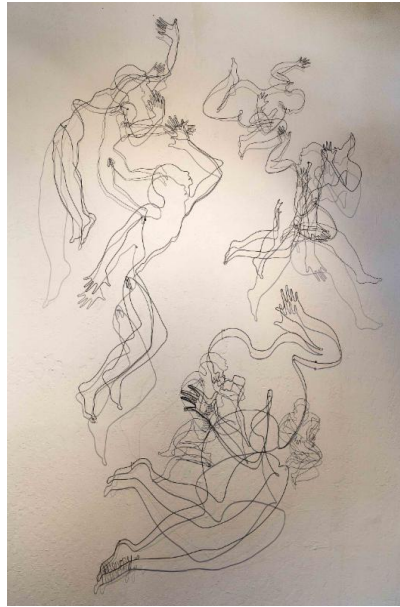
[Mid-South Sculpture](#)

15-Day with a party and reception Saturday evening April 23, which was attended by an estimated crowd of 250 or more people. The show continues through April 29, 2016.

The exhibition was organized by **Lynne Todaro**, PRS's coordinator for the South Bay region, who deserves kudos for exemplary execution of the exhibit. Also meriting call-outs are **Peter Keresztury**, his wife **Deborah**, and **Dawn L. Hart**, who vigorously and successfully promoted the show with postings on various social media and art promotion sites. Their work resulted in articles with interviews with some of the artists in the **San Jose Mercury News**, and subsequent articles in local newspapers, including the **Rose Garden Resident**, **Willow Glen Resident**, **Cambrian Resident**, **Cupertino Courier**, and Sunnyvale's **The Sun**. The following are examples of the artists' exhibited works.



by Cheryl Coon



by Pamela Merory Dernham



[Alliance](#)

[National Sculpture Society](#)

[di Rosa Gatehouse Gallery](#)

[Djerassi Resident Artists Program](#)

[SculptCast](#)

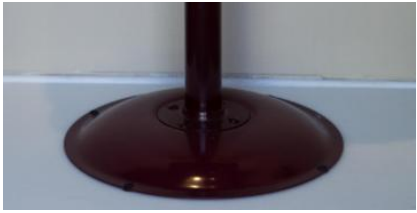
[Claudia Chapline Contemporary Art](#)

[SMAart Gallery](#)

[Voigt Family Sculpture Foundation](#)

[www.AIESM.com](#)

[ArtObjectGallery.com](#)



by Bette Linderman



by Lynne Todaro



by Jason Bernhardt



by Stephanie Metz



by Rosemary Penhallow





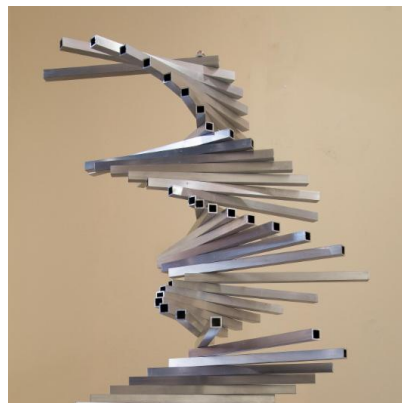
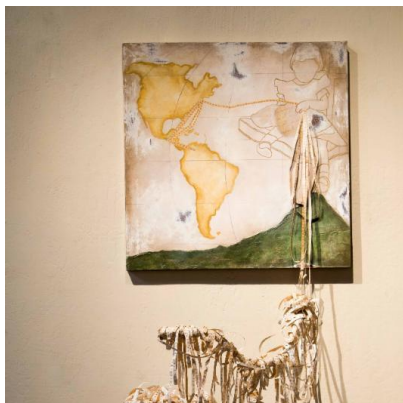
by Brad Orsburn



by Corinne Whitaker

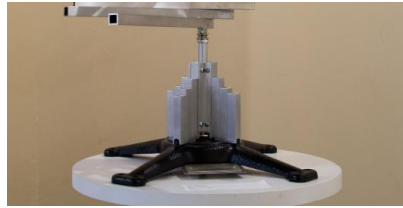


by Jon Kwak





by Tessie Barrera-Scharaga



by Peter Keresztury



by Dawn L. Hart



by Eric Saint Georges



by Leslie Leasure

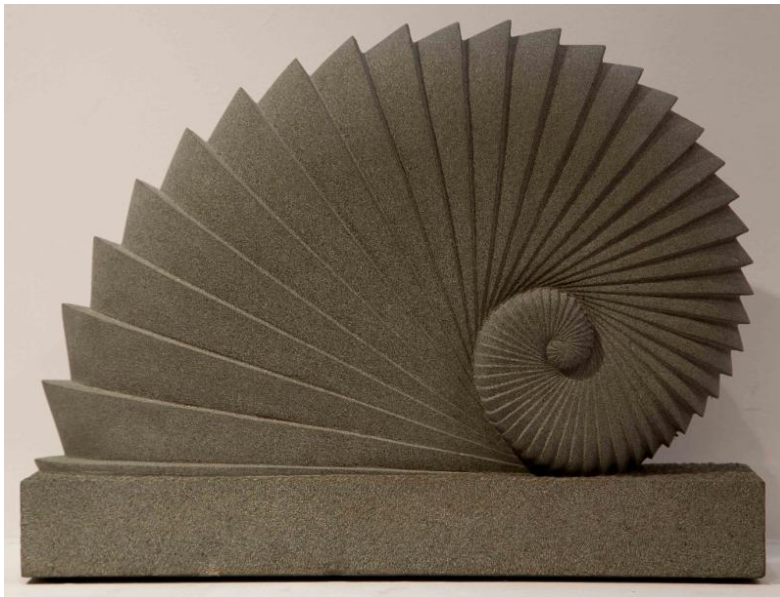




by Brian Tepper



by Syd Dunton



by Oleg Lobykin



by Kristin Lindseth



by Patricia Bengston-Jones



by Jeff Owen



by Stephanie Metz



by Charles H. Stinson





by Flavia Krasilchik



by Ken Matsumoto



View of installation in one gallery wing

LINKS:

- Check out our gracious host Ken Matsumoto's **Art Object Gallery** web page at ArtObjectGallery.com.
- View excellent coverage of the exhibition in the **Arts Scene: Bay Area Culture and Entertainment** section of the **San Jose Mercury News** at [this link](#) and [another at this link](#).
- See **Peter Keresztury**'s Facebook site for many photos and videos: <https://www.facebook.com/PeterKereszturysculptorandphotographer/>
- View Jeff Owen's short video of the exhibition at this link: <http://youtu.be/dDooS2PnkoE>

- And if you missed the exhibition, you can view photos of the works on Bette Linderman's [Flickr page at this link](#).

Other PRS IS-Day Events

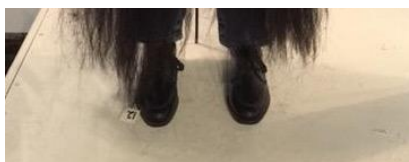
Jann Nunn organized a tour of Sonoma State Sculpture Department on IS-Day (image below). Approximately 30 guests toured the Sonoma State sculpture facilities, including the welding and metal studio, the foundry, the ceramics studio, and the sculpture courtyard. Several students discussed their art, which was exhibited around the Art Department, in the student gallery, and in the annual Student Juried Exhibition in the University Art Gallery. Later the group toured the campus and viewed Jann's Holocaust and Genocide Memorial, plus two large permanently displayed sculptures created by an alumnus and a current sculpture student.



Charles H. Stinson celebrated IS-Day by opening his studio space with an exhibition of twenty-five of his newest works in the series *Bamboo.2* (image left), along with mixed media works on paper by Andrew Ogus.



For IS-Day **Al Honig** had a reception for his solo exhibition of his assemblage sculptures (image right) at *The Reclaimed Room* exhibition space at Building Resources, San Francisco, CA.



Volunteering: How Great Things "Happen"

PRS depends on volunteers, who turn good ideas into great projects, including our recent IS-Day exhibit, the *Disruption* exhibit at Grounds for Sculpture in New Jersey, the tour of Steven Oliver Ranch, and much, much more. Our group is richer when each person helps in some way to reach our common goals.

Our **Volunteer Coordinator, Irma Bijou** says *volunteering can be effective, easy, fun, and rewarding*. Simply put, we all want good matches between a volunteer's skills and interest areas and the nature of the project.

Irma explains that when you begin or renew your PRS membership, the "Join Us" web page asks you to rank your **three** top volunteer interest areas. Irma can now access this information to help assemble small groups by matching needs to skills and interests. (If your interest areas change, rank your three interest areas in an email directed to info@pacrimsculptors.org so our Administrator can update the data with a copy to Irma.) Here are the current volunteer focus areas:

- **Exhibitions:** Members who are adept at organizing and coordinating shows (or wish to develop these skills) help plan and execute shows, following models that have worked for us before. (Note: *every member* in an exhibition is expected to volunteer with setup, gallery-sitting, take-down, or related activities.)
- **Events:** Members with interest in organizing educational experiences help turn wishful ideas into great learning experiences, including tours, workshops about new materials and methods, and more.
- **Promotion:** Members with good communication skills (written, audio, video) help promote exhibitions and other activities through press releases, social media, and more. This includes opportunities with our parent organization, ISC, and **Sculpture** magazine.
- **Outreach:** Members with academic connections are in excellent positions to encourage other sculptors, including faculty and students, to join PRS, and to participate in the annual ISC Outstanding Student exhibitions and awards.
- **History:** For members interested in history, PRS has thick files richly documenting many prior shows and activities. Ideally, these materials will be migrated online and accessible by all members. Also underway are interviews of senior and newer members for our newsletter and eventual posting to our website resources.
- **Web/Tech:** Not every member is into technology, but almost every organization needs the help of techies. These volunteers help plan and manage our website, membership database, and other "techie-tools".
- **General!** Any member can be generalist volunteer, helping in whatever ways are needed: organizing, hosting, setting up, taking down, errands, and more!

PRS covers a broad geographic area, so many activities are organized in local

subgroups by **Area Coordinators** who work with other local volunteers. Contact these people if you have ideas and desires for proposals in your area.

- Peninsula: [Danielle Fafchamps](#)
- South Bay: [Lynne Todaro](#) & [Bette Linderman](#)
- Santa Cruz: [Rosy Penhallow](#) & [Cynthia Siegel](#)
- North Bay: [Claudia Chapline](#)
- San Francisco: [Charles Stinson](#)
- East Bay: [Anya Behn](#)
- (Other areas to be added as needed.)

Irma says, *Human connection and creativity are what make our organization . . . we don't need to wait until our December party to get together. Let's meet for coffee or tea, share news and ideas, get to know each other better, and let creative ideas emerge. Contact me with your questions and ideas and I'll be happy to talk with you!* (Contact Irma at bijouceramics@gmail.com.)

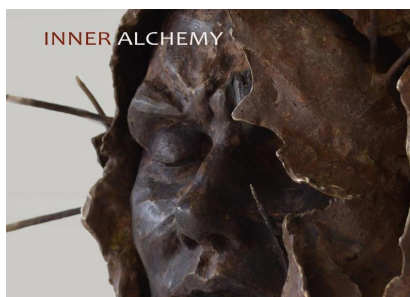
Member News

Pamela Blotter (image below) and **Claudia Chapline** have works in the Art Contemporary Marin exhibition **Wall Sculptures** at the Sausalito Bay Model Visitor Center in Sausalito, CA. The exhibition continues through June 13, 2016.



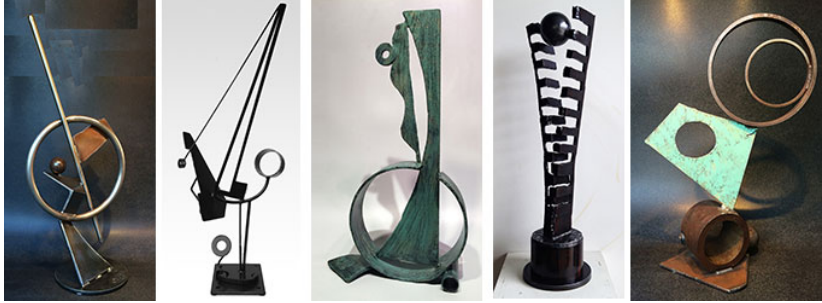
Corinne Whitaker exhibited some of her digital sculptures in the April 2016 Berkeley Art Party.

Kristin Lindseth-Rivera will have a solo exhibition **Inner Alchemy** at the Peninsula Museum of Art, 1777 California Drive, Burlingame June 5 through August 14, 2016, with reception on June 5th from 2-4PM.



Jeff Owen's sculpture are being shown throughout the Palo Alto JCC (images below); read more at this link: <http://paloaltojcc.org/.../Sculptu.../Sculpture-Garden-Jeff-Owen>

[Jett-Owen](#). Jett has been busy producing lots of new works in his studio.



Leslie Plato Smith has two metal sculptures in an art opening at Las Positas College in Livermore, CA, May 5, 6-7:30 PM in the MCA Gallery Building 4000.



Gene Erickson's sculpture "*In Memoriam*" (image left) is in the *Fresh Works IV* juried exhibition at the Harrington Gallery in the Firehouse Arts Center. The show continues through June 4, 2016.

Jann Nunn was featured in a recent online interview viewable [at this link](#). She also participated in a panel discussion at the **History Museum of Sonoma County** with **Jonah Raskin**.



Maj-Britt Hilstrom completed a new sculpture titled *Bury Guns, Not People*; the work (image left) is made of Marble, Belgian Val St. Lambert crystal and glass.

Lynne Todaro, Corinne Whitaker, Rosy Penhallow, and Cynthia Siegel have sculptures in the *Pajaro Valley Arts Presents 10th Anniversary Sculpture IS In the Gallery* from May 4 through June 19, 2016.

Sawyer Rose's sculpture/social practice project *Carrying Stones* (image below) will debut at San Francisco's Fort Mason Center later this year. Sawyer's proposal for an

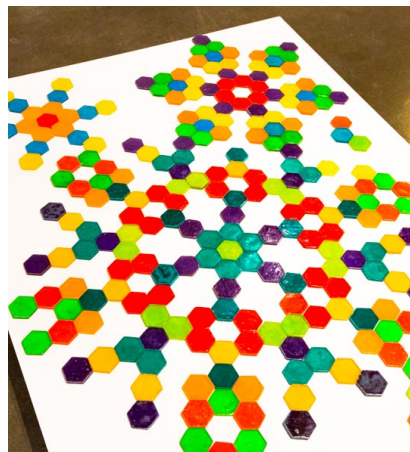
artist-in-residence program at Fort Mason Center has been accepted for later in 2016.



Michael Walsh's *Cosmic Carousel* is a monumental interactive kinetic spinning object that has delighted Burning Man participants and is now touring on an exhibition journey to Maker Faire in the Bay Area and then to the upcoming **International Sculpture Conference** in Pittsburgh, PA. Watch an Indiegogo [video of the piece at this link](#) or click below.



Ruth Tabancay's works were selected for the exhibition ***Lines That Tie: Carole Beadle and Lia Cook***, at the Museum of Craft and Design, San Francisco, CA (www.sfmcd.org). The exhibition honors both California College of the Arts Textile Department professors on the occasion of their retirement from CCA. Guest Curator Deborah Valoma, Professor and Chair of the CCA Textiles program, selected eight former BFA and MFA Textile graduates for exhibition, which continues through August 7, 2016. Ruth's work (image right) is ***Interlinked*** (2016), composed of cast sugar, sucrose, glucose, and food coloring.



Barbara Stevens Strauss has sculptures in the *Fresh Works* exhibition in the Harrington Gallery in Pleasanton (CA) through June 4, and also has several pieces exhibited in Art Thou on Solano, in Berkeley (CA). Most exciting, her work (below) was in an ikebana exhibition in San Francisco's Asian Art Museum during April.



ISC News

The twenty-sixth International Sculpture Conference is October 15-18, 2016 in Pittsburgh, PA. Plan to attend; [click here for details](#).

Check out the ISC Website Sculpture.org member resources; add photos of your works annually for review by collectors, gallerists, curators, and corporate buyers. Also check out the *Insider* section of *Sculpture* magazine.

Welcome New Members

Margo McMahon of Oak Park (IL) works in wood, concrete, and cast bronze. She studied art at Yale University and the Art Institute of Chicago, and has taught at Yale University, the School of the Art Institute and DePaul University. Her website is www.margotmcmahon.com. Margo is also a member of Chicago Sculpture International, also a chapter of ISC.

Ken Matsumoto of San Jose (CA) sculpts in stone and mixed media and does environmental design. His Art Object Gallery has been the site for our recent month-long members' exhibition celebrating IS-Day (thank you for hosting, Ken!). His website is www.artobjectgallery.com.

*Invite your sculptor colleagues to join and **get one month free membership** for each new member you recruit (cannot previously have been a member). Just ask the new member to mention your name while filling out the "How did you hear about us?" blank in the application form.*

Berkeley Art Party!

The **Berkeley Art Party** is a pop-up gallery event 7-9:30 PM on the 2nd Friday of each month, featuring selected works of 3 to 4 artists. The events, hosted in a large studio in Berkeley's Sawtooth Building, are free and include musical entertainment and refreshments. Find more information at www.berkeleyartparty.com.

The event has expanded and now includes a series of "Berkeley Art Party Talks" on the Saturday following each Friday's exhibit.

Seating at the Saturday events is limited; please RSVP and direct questions to Barbara Stevens Strauss (info@berkeleyartparty.com); a \$10 donation is requested at the door.

If you are interested in exhibiting at The Berkeley Art Party, please contact info@berkeleyartparty.com. There is no fee for exhibiting, sales are commission free, and artist information and links are permanently hosted on www.berkeleyartparty.com. Each event is jointly promoted by participating artists in conjunction with a growing Berkeley Art Party mailing list.

The Berkeley Art Party is "... *a model of a community-building effort* ..." (quote from conceptual artist Michele Pred at her recent professional development talk at the Berkeley Art Center).

Members Offering or Seeking . . .

Sculpture needs restoration -- A collector needs a piece of outdoor sculpture (image right) inspected and refurbished. The project can be completed on location in Menlo Park or can be delivered to your studio. All repairs must tolerate exposure to the elements. The figure is approximately 60" tall and 36" wide, hollow, likely constructed with fiberglass, and will need some physical repair and touch-up painting. If you are interested in and qualified to do this work, please contact Lucky Rapp (luckyrapp@gmail.com or 415-350-3938).



Platform top view

FREE or BEST OFFER -- A sturdy steel platform on casters (image left and below), ideal a for working on large, heavy sculptures. The steel base is 42" x 55" x 9.5" tall; it has heavy-duty casters, a foot-activated brake, and slots for a forklift. Pre-drilled holes allow insertion of vertical support bars, which can also be used for an armature or to steer the platform (send inquiries

to chs@charlesstinson.com).





Platform side view, with casters, brake & forklift slots



Lynne Todaro's school has sent its brand new **Pacific Kiln Company's deluxe ceramic shell mixer** (left) to the state surplus website to be auctioned off. The mixer has never been used; it has stainless steel tanks and holds 90 gallons of materials. Go to www.publicsurplus.com then on the right side select California as the region, then West Valley Mission CCD as the agency.

Post a FREE ad! Get rid of art stuff, find a studio, find a studio mate, or get a used whatchamacallit or thingamabob for that next sculpture! Just [email a description to the editor](#) to include in the next newsletter. Include a photo of items offered, if possible.

Membership in PRS & ISC

Pacific Rim Sculptors (www.pacrimsculptors.org) must also join the International Sculpture Center (www.sculpture.org), its parent organization, with 20% discount off ISC membership (enter "PRS" as the Chapter Code). For more information [click here](#).

Ways to Help PRS

Volunteer! Contact volunteers@pacrimsculptors.org to indicate your interest and special skills.

Donations to Pacific Rim Sculptors are now tax deductible (for tax reporting, give PRS's EIN 81-0919806)

Contribute to the Newsletter: [Click here](#) to send brief articles, reviews of shows, ideas for future newsletters. If your contribution is time-sensitive, it is best to send materials not later than the third week of any month. **Please** include clear photographs, if at all possible!

Contribute to the Website: We want continually to improve our website. Email suggestions to improve it to [Website Suggestion](#).

Participate with our Facebook Page: Sign up for our new Facebook page, then you can join in the discussions and postings! To join, simply [visit this link](#) and click once on the "Join Group" button on the right hand side of the page. An

Administrator will authorize your request, usually within 1-2 work days.

Happy sculpting!

Charles H. Stinson
Newsletter Editor

Pacific Rim Sculptors, PO Box 5072, Berkeley, CA 94709