

Hello!

What's hot -- besides the weather? Well how about our **PRS chapter discount code** to use when you register to attend the ISC conference in Pittsburgh this Fall? It is only good for PRS members: **PRSpgh16** (if you have difficulties registering, just email or call the ISC registration staff; they are happy to help). I highly recommend the conferences; they are amazing.

What else is hot? Well, a San Francisco based exhibitions planning group (including **Dale Eastman, Paul Baker, Catherine Merrill**, and myself) is diligently researching possible exhibition venues here. This is an extraordinary challenge during this Bay Area tech-driven economic boom, but we are relentlessly determined!

Even more hot? Well, **Pamela Merory Dernham** and **Peter Hiers** and I have been working with ISC to plan for PRS chapter presence in inter-chapter collaborations at ISC conference . . . with intentions for more exhibitions in prominent places, such as our participation in the recent **DISRUPTION** show at Grounds for Sculpture in New Jersey. More big shows for the future!

LAZY days of Summer? I don't think so!

As always, Happy Sculpting!

Best regards,
Charles H. Stinson
Newsletter Editor

Member News

Anya Sophe Behn's a solo exhibition, **Dreaming Space**, at the Abrams Claghorn Gallery in Albany, CA for the month of July, had an artist reception July 9. Gracefully twisting suspended networks of wires traced patterns evocative of neural networks, roadmaps, the internet, and the potent interconnections of relationships (below left). Three suspended metallic screen bags (below right) contained "Robot Embryo's", which invited visual exploration.

IN THIS ISSUE

Members News
ISC News
Welcome New Members
Berkeley Art Party
Members Offering or Seeking
Behind the Scenes

PRS and ISC



Do you have experience working with non-profits or grant-writing? Pacific Rim Sculptors needs volunteers to help create our future! [Contact us](#) for more information.

QUICK LINKS

[PRS Website](#)
[International Sculpture Center](#)
[Texas Sculpture Group](#)
[Chicago Sculpture International](#)
[Mid-South Sculpture Alliance](#)
[National Sculpture Society](#)
[di Rosa Gatehouse Gallery](#)
[Djerassi Resident Artists Program](#)
[SculptCast](#)
[Claudia Chapline Contemporary Art](#)
[SMAart Gallery](#)
[Voigt Family Sculpture Foundation](#)
[www.AIESM.com](#)



Leslie Plato Smith's sculpture "She" (left) was accepted in the **7th Annual Visions In Clay** exhibition at San Joaquin Delta College Horton Gallery, juried by Liz Quackenbush. Works by PRS member **Linda Fitz Gibbon** will also be in the exhibition, which opens August 25 and will continue through September 16, 2016, with an artists' reception September 1, 2016 from 5-7PM. [Details available at this link.](#)

Jane B. Grimm exhibited works at the Palo Alto Clay and Glass Festival at the Palo Alto Art Center July 9-10, and will be in a two person show at the SFMOMA Artist Gallery at Fort Mason Center from October 1 through November 6, with an opening reception 5-7 PM Wednesday October 5, 2016 (images below).



Happy birthday to Lynne Todaro! PRS's hard-working South Bay Regional Coordinator celebrated her **Big Six Oh** birthday in style on July 23, surrounded by sculptors and other friends in a party at her home in San Jose.

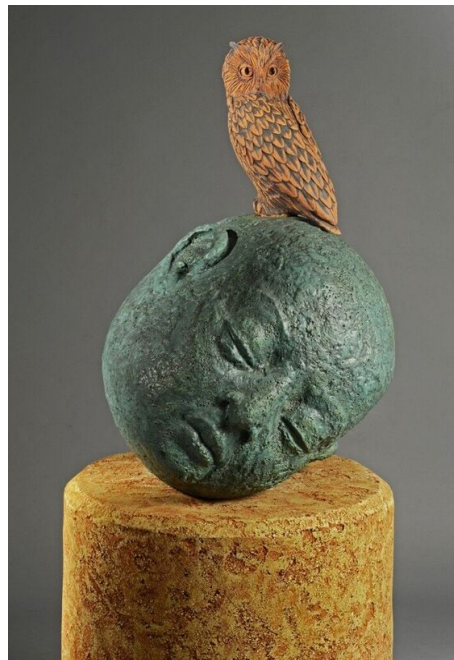


Marianne Lettieri's solo exhibition **Reflections** (left and below) opens August 20, 2016 at the San Francisco Museum of Craft and Design, and continues through January 22, 2017. Marianne's works contextualize overlooked vintage and Victorian relics

of home-making and the ritual-like repetitive domestic acts that serve as physical reminders of time's passage.



Art Contemporary Marin, in collaboration with Falkirk Cultural Center and ArtWorks Downtown, present the exhibition **3D/3Seasons**, a self-guided sculpture walk in San Rafael, which continues through September 19, 2016. At the May 27 opening, PRS members **Claudia Chapline** and **Pamela Blotner** greeted attendees at the historic Falkirk Cultural Center before they started the tour of 12 outdoor sculptures, including works by PRS members **Robert Abrams**, **Virginia Stearns**, and **Clayton Thiel** (image below right).



Cynthia Handel has works in the invitational exhibition **Bronze Inspired by Nature** at the Livingston Center for Art and Culture in Livingston, MT. Details available at www.livingstoncenter.org.



Jann Nunn is currently showing her new large-scale steel outdoor sculpture "**Commune**" in the exhibition **Geometric Reflections: Celebrating Ten Years of the Voigt Family Sculpture**, at Paradise Ridge Winery, Santa Rosa, CA, through April 2017. Her work "**Arc of the Atlas**" and several hand-cut paper sculptures (below) from the "**New Punctuation**" series are exhibited in **NextNewPaper**, at the ICA in San Jose, CA, through September 18, 2016.



Peter Keresztury of Novato will have five of his kinetic sculptures (below) in the Marin Society of Artists Gallery exhibition **The Abstract Eye** from August 13 through August 27, 2016. Reception is Sunday August 14 from 204 PM. [Details at this link.](#)





Ruth Tabancay's series, "Igneous Systems" (image left), were shown at Mercury20 Gallery, Oakland, CA.

Todd Laby's installation "Migrating Houses" was at Vessel Gallery, Oakland, CA.



ISC News

The twenty-sixth International Sculpture Conference is October 15-18, 2016 in Pittsburgh, PA. Plan to attend; [click here for details](#). PRS members are encouraged to consider participating in a panel discussion, demonstration, or other activities. Dues-paying PRS/ISC members get a significant discount if using the following code for registration: **PRSpg16**.

Check out the ISC Website Sculpture.org member resources; add photos of your works annually for review by collectors, gallerists, curators, and corporate buyers. Also check out the *Insider* section of *Sculpture* magazine.

Welcome New Members

Invite your sculptor colleagues to join and **get one month free membership** for each new member you recruit (cannot previously have been a member). Just ask the new member to mention your name while filling out the "How did you hear about us?" blank in the

Berkeley Art Party!

The **Berkeley Art Party** and pop-up gallery is 7:00 to 9:30 PM on the 2nd Friday of each month, featuring selected works of 3 to 4 artists. There is no exhibition fee, no sales commission, and artist information and links are permanently hosted on the website www.berkeleyartparty.com. The events are hosted in a large studio in Berkeley's Sawtooth Building and include free musical entertainment and refreshments. The events are promoted by the participating artists and the growing Berkeley Art Party mailing list.

Newly added are "Berkeley Art Party Talks" on some Saturdays after the Friday exhibit; a \$10 donation is requested at the door. Seating is limited; RSVP with questions or proposals to participate to Barbara Stevens Strauss (info@berkeleyartparty.com). More information is available at www.berkeleyartparty.com.

Members Offering or Seeking . . .



Lynne Todaro's school has sent its brand new **Pacific Kiln Company's deluxe ceramic shell mixer** (left) to the state surplus website to be auctioned off. The mixer has never been used; it has stainless steel tanks and holds 90 gallons of materials. Send inquiry emails to Lynne.Todaro@wvm.edu.

Post a FREE ad! Get rid of art stuff, find a studio, find a studio mate, or get a used whatchamacallit or thingamabob for that next sculpture! Just [email a description to the editor](#) to include in the next newsletter. Include a photo of items offered, if possible.

Membership in PRS & ISC

Pacific Rim Sculptors (www.pacrimsculptors.org) must also join the International Sculpture Center (www.sculpture.org), its parent organization, with 20% discount off ISC membership (**enter "PRS" as the Chapter Code**). For more information [click here](#).

Interact with PRS

Volunteer! Contact volunteers@pacrimsculptors.org to indicate your interest and special skills.

Donations to Pacific Rim Sculptors are now tax deductible (for tax reporting, give **PRS's EIN 81-0919806**)

Contribute to the Newsletter: [Click here](#) to send brief articles, reviews of shows, ideas for future newsletters. If your contribution is time-sensitive, it is best to send materials not later than the third week of any month. **Please** include clear photographs, if at all possible!

Contribute to the Website: We want continually to improve our website. Email suggestions to improve it to [Website Suggestion](#).

Communicate to PRS Membership: Messages can be sent to pacrimsculptors@googlegroups.com. Moderators review the messages to determine if they are OK'd for distribution; this is necessary to minimize spam and inappropriate messages. The moderator may suggest an alternate route for distributing the message (e.g., via the newsletter, or as a communication from our Administrator).

Participate with our Facebook Page: Sign up for our new Facebook page, then you can join in the discussions and postings! To join, simply [visit this link](#) and click once on the "Join Group" button on the right hand side of the page. An Administrator will authorize your request, usually within 1-2 work days.

Volunteering & Exhibition Planning

Exhibitions are a highly valued benefit of PRS membership. Most of our shows are organized by members. Participating in show development is a great way to volunteer. Let your regional Coordinator know if you are interested in helping organize shows:

- Peninsula: [Danielle Fafchamps](#)
- South Bay: [Lynne Todaro](#) & [Bette Linderman](#)
- Santa Cruz: [Rosy Penhallow](#) & [Cynthia Siegel](#)
- North Bay: [Claudia Chapline](#)
- San Francisco: [Charles Stinson](#)
- East Bay: [Anya Behn](#)

Or volunteer your time in other ways. Volunteer Coordinator **Irma Bijou** says, *volunteering can be easy, fun, and rewarding.* Contact *Irma with your questions and ideas about volunteering; she'll be happy to talk with you:* bijouceramics@gmail.com.