

Pacific Rim Sculptors

Newsletter

Summer is -- GONE!

September 2016

Hello Charles!

April 24 of every year is IS-Day. Start now to plan your IS-Day 2017 exhibitions or other activities and register them with the ISC, which provides excellent coverage and promotional materials to help you attract visitors. [Find more information here.](#)

I hope you can attend the upcoming annual ISC conference, this time in Pittsburg, PA. The conference is always an inspirational event. Our **PRS chapter discount code** for registration is **PRSpgh16** (email or call ISC registration staff if you encounter problems). Register before September 19 for the best rate.

Don't be too surprised if a future newsletter looks different: PRS is switching to new organization management software with some exciting features and flexibility. More news to follow on this.

As always, Happy Sculpting!

Best regards,
Charles H. Stinson
Newsletter Editor

Member News

Pamela Merory Dernham, Peter Hiers and Mark Malmberg plan to attend this year's ISC Conference ***Sculpture in Context: Tradition and Innovation***, in Pittsburgh, PA. They will participate in conversations with other ISC chapters, including conversations about potential joint exhibitions (such as our recent ***Disruption*** exhibition in Grounds for Sculpture, NJ). [Send an email to the editor if you plan to attend so PRS members can connect with each other in Pittsburgh.](#)



In her role as our San Jose area coordinator, **Lynne Todaro** has been leading organization of PRS participation in the **San Jose Mini Maker Faire**, September 4. Several of our sculptors will be at the booth, showing their sculptures, providing demonstrations, and offering information about Pacific Rim Sculptors. Read about

IN THIS ISSUE

Members News
Article Headline
ISC News
Welcome New Members
Berkeley Art Party
Members Offering or Seeking
Memberships
Contribute
Behind the Scenes

PRS and ISC



Do you have experience working with non-profits or grant-writing? Pacific Rim Sculptors needs volunteers to help create our future! [Contact us](#) for more information.

QUICK LINKS

[PRS Website](#)
[International Sculpture Center](#)
[Texas Sculpture Group](#)
[Chicago Sculpture International](#)
[Mid-South Sculpture Alliance](#)
[National Sculpture Society](#)
[di Rosa Gatehouse Gallery](#)



the [San Jose Maker Faire here](#) and plan to attend!

In his role as PRS's San Francisco area coordinator, **Charles Stinson** has been meeting with **Dale Eastman**, **Catherine Merrill**, and **Paul Baker** to research exhibition opportunities in San Francisco. Despite loss of several prior venues and massive competition for the City's exhibition spaces, the group was encouraged with findings of some novel exhibition possibilities. The work group plans to submit proposals in coming months. [Send an email](#) if you'd like to participate in planning.

Catherine Merrill curated the exhibition ***A Passion for the Figure: Sensual Inspirations Expressing the Beauty & the Power of the Human Design***, including paintings and sculpture by six Bay Area artists at Back To The Picture Art & Framing, 934 Valencia Street, San Francisco, CA. The exhibition's opening reception is 7-10 PM Saturday September 17, 2016.



Ceramic torso by Catherine Merrill



Ceramic torso by Michael Ruiz

Peter Keresztury exhibited his kinetic sculptures and photographs in August in the show ***The Abstract Eye*** at the Marin Society of Artists gallery in San Rafael, CA (image below). His sculpture "I-Beam Construct #2" appeared in the Arts section of *The Marin Independent Journal*.



[Djerassi Resident Artists Program](#)

[SculptCast](#)

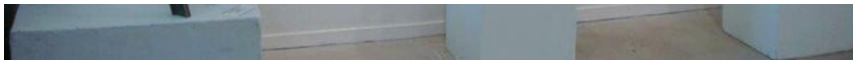
[Claudia Chapline Contemporary Art](#)

[SMAart Gallery](#)

[Voigt Family Sculpture Foundation](#)

[www.AIESM.com](#)

[ArtObjectGallery.com](#)



Kate Ruddle will live in Iceland for the month of September for a textile artist in residence program. She plans to use natural dyes derived from native lichens (*that's one below*) to color fabrics while concentrating on an environmental piece about preservation of species. [Check out the information here](#) to read more and optionally to follow her Iceland blog. (Click the image below to read about lichens in Wikipedia.)



Linda Fitz Gibbon and **Leslie Plato Smith** have works in the exhibition **Visions in Clay**, curated by Liz Quackenbush, at San Joaquin Delta College's LH Horton Jr. Gallery August 25 through September 16, with reception September 1, 5-7 PM.

**Visions
in
Clay
2016**

SAN JOAQUIN DELTA COLLEGE
LH HORTON JR GALLERY
AUGUST 25 – SEPTEMBER 16
RECEPTION ~ SEPTEMBER 1 • 5-7PM

Juror ~ Liz Quackenbush
Ceramic Artist
Professor of Art, Penn State University

Leslie Plato Smith received the **Juror's Award** in the recent **Wild/Mind** exhibition at Gearbox Gallery in Oakland, CA; juror was George Lawson of George Lawson Gallery, San Francisco, CA. **Leslie** also has a solo exhibition of paintings, **Portrayals: Faces from the Classroom**, in the June Steingart Gallery, Laney College, curated by Dr. Leslee Stratford. Artist reception is 4-6PM Friday September 2, 2016 at 900 Fallon Street, Oakland, CA.



Marianne Lettieri's solo show **Reflections** at San Francisco's Museum of Craft and Design (image left) had a VIP reception in August. The show continues through January 22, 2017.





The exhibition **3D/Seasons** by the Art Contemporary Marin in collaboration with Falkirk Cultural Center and ArtWorks Downtown continues through September 20, 2016. PRS members with works included are **Robert Abrams, Virginia Stearns, and Clayton Thiel.**



Pamela Blotner's drawings and sculptures are in a solo show **Menacing Beauty** from September 3-30, 2016, at Abrams Claghorn Gallery, Albany, CA. The exhibited works are inspired by Pamela's global travels and her deep belief in conserving land and species. Opening reception is 4-7PM Saturday September 10.

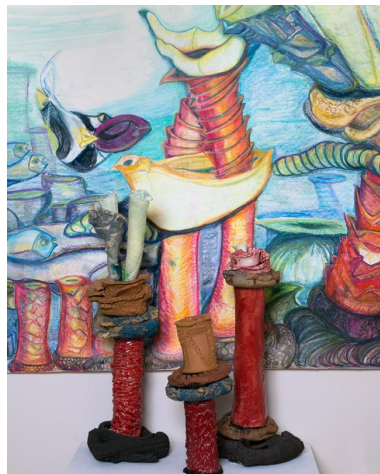


Gandring's Kris, by Pamela Blotner

Leitha Thrall, Maru Hoerber and Leslie Plato Smith have works (some images below) in Blue Line Art's exhibition, **Politically Charged**, at Coker Family Gallery in Roseville, CA. The show reception is 6-9 PM September 17; the show continues through October 1, 2016.



by Leitha Thrall



"Red Toxins" installation by Leslie Plato Smith



PRS members **Darrell Phelps, Oleg Lobykin, Bette Linderman, and Ken Matsumoto** are among the several artists participating in the **Artist's Studio Inventory Sale** at Art Object Gallery (www.artobjectgallery.com) in



Gallery (www.artobjectgallery.com) |||
San Jose 6:30 to 9:30 PM Saturday,
September 10, 2016.

Corinne Whitaker has works in the newly opened Moss Zone Sculpture Garden of the Paul Mahder Gallery in Healdsburg, CA.



Special Opportunity

In 2015 the City of Oakland amended its public art obligations ordinance to include private residential and commercial development. The new residential development on the site of the former Oakland Naval Medical Center will have a public art obligation with a budget of \$800,000. Requests for qualifications (RFQ) will be posted on www.cafe.com in September. For more information about this unique opportunity, visit www.oakknollcommunity.com/public-art/.

ISC News

The twenty-sixth International Sculpture Conference is October 15-18, 2016 in Pittsburgh, PA. Plan to attend; [click here for details](#). PRS members are encouraged to consider participating in a panel discussion, demonstration, or other activities. Dues-paying PRS/ISC members get a significant discount if using the following code for registration:

DISCOUNT CODE: PRSpgh16

Start planning now to participate in International Sculpture Day April 24, 2017. [More information is available here.](#)

Check out the **ISC Website** member resources; add photos of your works annually for review by collectors, gallerists, curators, and corporate buyers. Also check out the *Insider* section of *Sculpture* magazine.

Welcome New Members

Ruth Geos is a San Francisco sculptor for whom the bird world is a "boundless source of color, song, symbol, depth, and beauty." Many of her works use feathers, often joined with gold and connected with poetry. Her website is www.RuthGeos.com.

*Invite your sculptor colleagues to join and **get one month free membership** for each new member you recruit (cannot previously have been a member). Just ask the new member to mention your name while filling out the "How did you hear about us?" blank in the application form.*

Berkeley Art Party!

The **Berkeley Art Party** and pop-up gallery is 7:00 to 9:30 PM on the 2nd Friday of each month, featuring selected works of 3 to 4 artists. There is no exhibition fee nor a sales commission, and artist information and links will be permanently hosted on the website www.berkeleyartparty.com. Hosted in a large studio in Berkeley's Sawtooth Building, the events include free musical entertainment and refreshments. Promotion is by the participating artists and the growing Berkeley Art Party mailing list. Newly added are "Berkeley Art Party Talks" on some Saturdays after the Friday exhibit; a \$10 donation is requested at the door. Seating is limited; RSVP with questions or proposals to participate to Barbara Stevens Strauss (info@berkeleyartparty.com). More information is available at www.berkeleyartparty.com.

Members Offering or Seeking . . .



Lynne Todaro's school has sent its brand new **Pacific Kiln Company's deluxe ceramic shell mixer** (left) to the state surplus website to be auctioned off. The mixer has never been used; it has stainless steel tanks and holds 90 gallons of materials. Send inquiry emails to Lynne.Todaro@wvm.edu.

Post a FREE ad! Get rid of art stuff, find a studio, find a studio mate, or get a used whatchamacallit or thingamabob for that next sculpture! Just [email a description to the editor](#) to include in the next newsletter. Include a photo of items offered, if possible.

Membership in PRS & ISC

Pacific Rim Sculptors (www.pacrimsculptors.org) must also join the

International Sculpture Center (www.sculpture.org), its parent organization, with 20% discount off ISC membership (**enter "PRS" as the Chapter Code**). For more information [click here](#).

Interact with PRS

Volunteer:

PRS exists through volunteer efforts of its members.
Email volunteers@pacrimsculptors.org to offer your interests and skills.

Non-profit:

Donations to Pacific Rim Sculptors are now tax deductible (for tax reporting, give **PRS's EIN 81-0919806**)

Contribute to the Newsletter:

[Click here](#) to send brief articles, reviews of shows, ideas for future newsletters. If your contribution is time-sensitive, it is best to send materials not later than the third week of any month. **Please** include clear photographs, if at all possible!

Contribute to the Website:

We want continually to improve our website. Email suggestions to improve it to [Website Suggestion](#).

Communicate to PRS Membership:

Messages can be sent to pacrimsculptors@googlegroups.com. Moderators review the messages to determine if they are OK'd for distribution; this is necessary to minimize spam and inappropriate messages. The moderator may suggest an alternate route for distributing the message (e.g., via the newsletter, or as a communication from our Administrator).

Participate with our Facebook Page:

Sign up for our new Facebook page, then you can join in the discussions and postings! To join, simply [visit this link](#) and click once on the "Join Group" button on the right hand side of the page. An Administrator will authorize your request, usually within 1-2 work days.

Exhibitions Planning

Exhibitions are valuable benefits of PRS membership. Most of our shows are organized by members, who gain great skills in planning and executing successful shows. Let your area Coordinator know if you want to help out:

- South Bay: [Lynne Todaro](#) & [Bette Linderman](#)
- Santa Cruz: [Rosy Penhallow](#) & [Cynthia Siegel](#)
- North Bay: [Claudia Chapline](#)
- San Francisco: [Charles Stinson](#)
- East Bay: [Anya Behn](#)

Or volunteer your time in other ways. Volunteer Coordinator **Irma Bijou** says, *volunteering can be easy, fun, and rewarding*. Contact Irma with your questions and ideas about volunteering; she'll be happy to talk with you: bijouceramics@gmail.com

to talk with you. ujjvalceramics@gmail.com.