

Here is your copy of the PRS Newsletter



From the Editor

Dear Charles Stinson,

Happy New Year!

I hope 2019 is an exciting, creatively productive and inspiring New Year for you.

Our PRS organization achieved a lot in 2018; our membership continued to grow and our Area Coordinators continued to organize local members and planned increasing numbers of impressive shows and events.

Also in 2018 we moved our newsletter and our website to a much improved platform that allows more support of our interests. The website and newsletter continues to evolve with members' suggestions of new features.

On behalf of our Board of Directors, I want to thank **Ruth Tabancay** for her service in 2018 as Director and Vice-President of the Board. Ruth is stepping down from the Board but will continue helping with social media including Facebook and GoogleGroups.

The Board also welcomes three excellently qualified new Directors for 2019: **Jeff Key**, **Catherine Daley**, and **Jann Nunn**, whose interests align nicely with PRS's trajectory. They will join on-going Directors **Carmen Almlie-Martinez**, **Barry Beach**, **Eileen Fitz-Faulkner**, **Oleg Lobykin**, **Charles Stinson**, and **Leitha Thrall**.

Now let's change the world for better with art!

Best regards,

Charles H. Stinson
Newsletter Editor

Area Coordinator News

Peninsula / South Bay:

The exhibition *Sculpture Now*, juried by Brigitte Micmacker, continues at the Peninsula Museum of Art in Burlingame, CA, until January 27. Congratulations to the Peninsula / San Jose Area Coordinators **Kristin Lindseth, Oleg Lobykin, Carmen Almlie-Martinez**, and **David Trousdale** for their work in producing this fine exhibition.

East Bay:

Area Coordinators **Eileen Fitz-Faulkner, Leitha Thrall**, and **Jann Nunn** are organizing the upcoming exhibition *Matter of Form*, juried by Christine Koppes, at Shoh Gallery, Berkeley, CA.

San Francisco:

Dale Eastman & Charles Stinson resume their second Thursday visits to SFMOMA and especially encourage San Francisco members to join them for dinner afterwards to discuss exhibition and event possibilities in the City.

Special: PRS Meeting, Holiday Gathering, & Potluck

Despite heavy rains the PRS Meeting, Holiday Gathering & Potluck at the beautiful home of **Eileen Fitz-Faulkner** was a delightful event, with delicious food & beverages, plus great conversations filled with ideas for 2019.



The centerpiece of the meal was Eileen's large pot of vegetarian chili enjoyed by **Pamela Merory Dernham** and **Joe Bologna** (above) . . .



. . . and also by outgoing Board Vice President **Ruth Tabancay** (above left) and Board Secretary **Leitha Thrall** (above right); a wide range of side dishes, desserts & beverages called for multiple helpings as the pouring rains disappeared from our awareness. Incoming Board Director for 2019 **Catherine Daley** (below left) is congratulated by continuing Board Director **Oleg Lobykin** (below right).





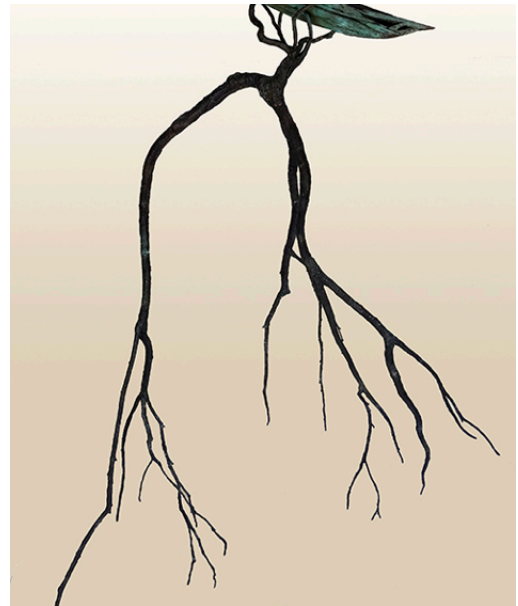
Member News



Zahava Sherez reports that her new sculpture “InBodied Light, Man 1” won 2nd place in the international exhibit *Balance* at APERO Gallery in Southern California. The December 2018 APERO catalogue (including Zahava's piece) can be [viewed at this link](#).

2018 was a great year for **Kristin Lindseth**. Her works were included in many exhibitions, including PRS's *Sculpture Now* exhibition at the Peninsula Museum of Art, Burlingame, CA (continuing through January 27, 2019, juried by Brigitte Micmacker (Kristin's piece "Aleppo" is below left; "Into the Unknown" is below right));



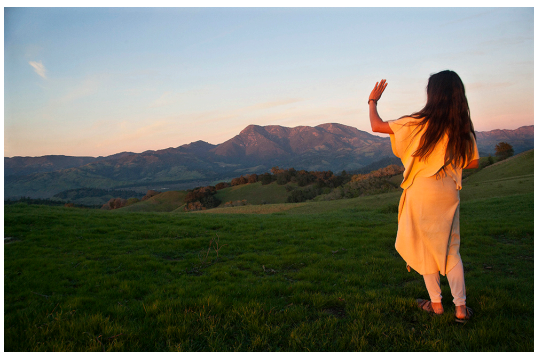


Kristin's piece "Awakening" (above left) was in *Current Forms and Sequences*, a PRS exhibition at Siskiyou Museum of Art, Dunsmuir, CA, juried by Phil Linhares, August - October, and her piece (above right) was in the invitational exhibition curated by Diana Argabrite *Showing Up With Care* at Euphrat Museum, De Anza College, Cupertino, CA. Her works were featured in the invitational exhibition curated by Marianne Kennedy McGrath *In the Artists Studio; Kristin Lindseth and George Rivera*, at New Museum of Los Gatos, Los Gatos, CA. She had works in *Nordic Voyage: A sense of Place; Exhibition by Nordic Five Artists*, at Firehouse Arts Center, Pleasanton, CA; and also in the *Haggin Museum 60th National Exhibition*, Haggin Museum, Stockton, CA.



Emil Yanos has two pieces ("Planter" above left, and "Octopus" above right) in the exhibition *Elements*, of the Marin Society of Artists, San Rafael, CA from January 10 through February 2, 2019, with reception Friday, January 11, 2019 from 5 to 8 PM. The exhibition invited artists to submit work based on one, some, or all of the 118 Elements of the Periodic Table.

Catherine Daley's photograph, "Siblings" (right), was selected by juror Alan Bamburger for the nationally juried exhibition *Memory and Perception* at Marin MOCA gallery, Novato, CA. The image is from Catherine's *Melting Portraits* series, which uses ice as a vehicle to dissolve / erase part of the image, and therefore, the memory. Juror Alan Bamburger selected works by 49 artists for the show from over 1500 submissions.



Another of **Catherine's** photographs, "The Source" (left), plus two of her bronze sculptures were curated into the exhibition *Art of Social Commentary* at Calabi Gallery in Santa Rosa, CA. The show was centered around the anniversary of the fires and the November elections. View works in the [exhibition at this link](#).

ISC NEWS

Check out the ISC Website Sculpture.org member resources; add photos of your works annually for review by collectors, gallerists, curators, and corporate buyers. Also check out the *Insider* section of *Sculpture* magazine.

Welcome New Members

Jan Blythe of Lafayette, in Contra Costa County, CA, creates found object sculpture & installations. Her preferred media include various mixed media, furniture, fabric, resin, wax, mops, brooms, ash, and plaster. Check out her website at JanBlythe.com.

Tina Maier of Pacifica, CA, creates abstract and figurative works with cut-worked textile combined with found objects. Check out her website at TinaMaier.com.

Marilynn Host of San Martin, CA, uses mixed media and encaustic to create her 2D & 3D wall hung and table top artworks.

Invite your sculptor colleagues to join and **get one month free membership** for each new member you recruit (cannot previously have been a member). Just ask the new member to mention your name while filling out the "How did you hear about us?" blank in the application form.

Membership in PRS & ISC

Membership in Pacific Rim Sculptors also requires joining the International Sculpture Center (www.sculpture.org), our parent organization, with 20% discount off ISC membership (enter "**PRS**" as the Chapter Code). For more information [click here](#).

Participate in PRS

Donate:

PRS is a 501(c)3 non-profit organization; for tax reporting: EIN # 81-0919806.

Contribute to the Newsletter:

Send brief articles, reviews of shows, ideas for future newsletters to Editor@PacificRimSculptors.org; include clear photographs, if possible!

Contribute to the Website:

Send suggestions to website@PacificRimSculptors.org.

Communicate to all PRS Membership:

Messages sent to pacificrimsculptors@googlegroups.com will be sent to the whole group after review by moderators to avoid spam and inappropriate messages. The moderator may suggest alternate distribution for the message (e.g., newsletter, or message from our

Administrator).

Participate with our Facebook Page:

Sign up for our new Facebook page: simply [visit this link](#) and click once on the "Join Group" button on the right hand side of the page. An Administrator will authorize your request, usually within 1-2 work days. Then start posting!

Your Area Coordinators

PRS shows & events are organized by member volunteers working in small groups. Connect with your area coordinator to suggest and to help plan shows & events:

South Bay:	Kristin Lindseth David Trousdale
Carmel/Monterey:	Corinne Whitaker
Marin:	Peter Keresztury
San Francisco:	Dale Eastman Charles Stinson
East Bay:	Eileen Fitz-Faulkner Leitha Thrall Jann Nunn
Humboldt County:	Lori Goodman

QUICK LINKS

[PRS Website](#)
[International Sculpture Center](#)
[Texas Sculpture Group](#)
[Chicago Sculpture International](#)
[Mid-South Sculpture Alliance](#)
[National Sculpture Society](#)
[di Rosa Foundation](#)
[Djerassi Resident Artists Program](#)
[SculptCast](#)
[Claudia Chapline Contemporary Art](#)
[Voigt Family Sculpture Foundation](#)

[www.AFCM.com](#)

www.AIESM.com
ArtObjectGallery.com
PNWSculptors.org